

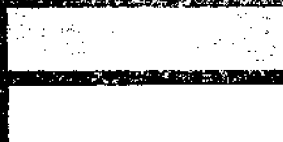


November 1996

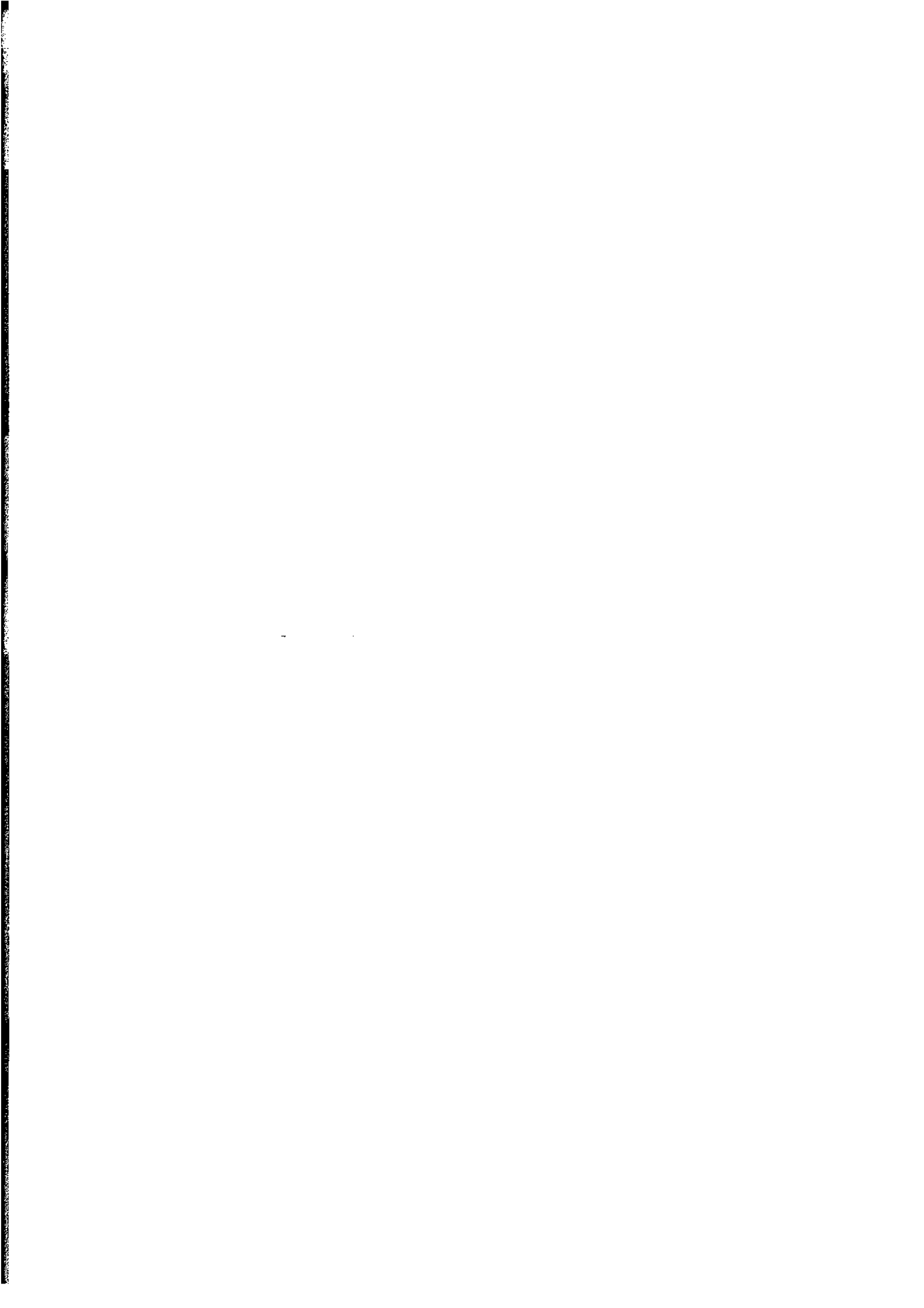
EMBARGOED UNTIL 11.30 AM (CANBERRA TIME)
FRI 29 NOVEMBER 1996

Monthly Summary of Statistics

Western Australia



ABS Catalogue No. 1305.5



CONTENTS

| | <i>Table</i> | <i>Page</i> |
|---------------------|--|-------------|
| POPULATION | 1.1 Estimated Resident Population | 1 |
| | 1.2 Components of Population Change | 2 |
| | 1.3 Registrations of Births, Deaths, Marriages and Divorces | 3 |
| | 1.4 Rates of Birth, Deaths, Marriages and Divorces | 3 |
| TOURISM | 2.1 Overseas Arrivals and Departures by Month | 4 |
| | 2.2 Short Term Overseas Visitor Arrivals from Selected Countries | 5 |
| | 2.3 Short Term Overseas Visitor Arrivals by Air: Purpose of Journey: Holiday | 6 |
| | 2.4 Short Term Overseas Resident Departures to Selected Destinations | 7 |
| | 2.5 Short Term Overseas Resident Departures by air: Purpose of Journey: Holiday | 8 |
| | 2.6 Tourist Accommodation | 9 |
| EMPLOYMENT | 3.1 Labour Force Status: Seasonally Adjusted | 10 |
| | 3.2 Labour Force Status: Trends | 11 |
| | 3.3 Employed Wage and Salary Earners by Industry and Sector | 12 |
| | 3.4 Average Weekly Earnings of Employees | 13 |
| | 3.5 Industrial Disputes Causing Stoppage of Work | 14 |
| RETAIL | 4.1 Monthly Retail Turnover: Original Estimates | 15 |
| | 4.2 Consumer Price Index: Perth | 16 |
| CONSTRUCTION | 5.1 New Residential Building Approved | 17 |
| | 5.2 New Non-Residential Building Approved | 18 |
| | 5.3 Selected Housing Price Indexes: Perth | 19 |
| | 5.4 Price Indexes of Materials Used in Building Other Than House Building: Perth | 20 |
| PRODUCTION | 6.1 Livestock Slaughtered | 21 |
| | 6.2 Meat Produced | 21 |
| | 6.3 Wool Receipts | 22 |
| | 6.4 Energy Production | 22 |
| | 6.5 Mineral Exploration: Expenditure by Type of Mineral Sought | 23 |
| | 6.6 Mineral Production | 23 |
| OVERSEAS TRADE | 7.1 Imports by Selected Divisions | 24 |
| | 7.2 Exports by Selected Divisions | 25 |
| TRANSPORT | 8.1 New Motor Vehicle Registrations | 26 |
| | 8.2 Vehicle Registration Statistics | 26 |
| FINANCE | 9.1 Private New Capital Expenditure by Selected Industry Groups | 27 |
| | 9.2 State Final Demand and Production Account | 27 |
| STATISTICAL SUMMARY | 10.1 Key State Indicators | 28 |

INQUIRIES

- PHONE ■ For more information about these statistics and of related unpublished statistics, contact Information Services on (09) 360 5140
- MAIL ■ Write to or visit Information Services, Bureau of Statistics, Level 16, Exchange Plaza Building, 2 The Esplanade, Perth WA 6000
- ELECTRONIC ■ On Elderlink key *620#
■ On Dial-A-Statistic phone 0055 86 400
-

**AUSTRALIAN BUREAU OF STATISTICS
WESTERN AUSTRALIA
NOVEMBER 1996 RELEASES**

.....
Catalogue

| <i>Number</i> | <i>Publication Title</i> | <i>Release Date</i> |
|---------------|--|---------------------|
| 8731.5 | Building Approvals, Western Australia, September 1996 | 05 November 1996 |
| 6410.5 | Price Index of Western Australian Produced Hardwoods, September 1996 | 08 November 1996 |
| 8741.5 | Dwelling Unit Commencements Reported by Approving Authorities, WA, July 1996 | 26 November 1996 |
| 1305.5 | Monthly Summary of Statistics, Western Australia, November 1996 | 29 November 1996 |
| 8705.5 | Estimated Stocks of Dwellings. Western Australia | 29 November 1996 |

.....

SYMBOLS AND OTHER USAGES

The following symbols, where shown in columns of figures or elsewhere in tables, mean:

- n.a. not available
- n.e.i. not elsewhere included
- n.p. not available for separate publication (but included in totals where applicable)
- n.y.a. not yet available
- nil or rounded to zero
- .. not applicable
- * Subject to sampling variability too high for most practical purposes.
- p preliminary - figure or series subject to revision
- r figure or series revised since previous issue
- break in continuity of series (where drawn between two consecutive figures or columns)

ROUNDING FIGURES

Where figures have been rounded, discrepancies may occur between sums of the component items and totals.

.....

**P.C.Kelly
Regional Director, Western Australia**

.....

Analysis of Table 1.1

In the March quarter 1996, Western Australia's population grew by 9,100 persons to 1,755,500. This is equivalent to an annual rate of population growth of 2.08%.

In the twelve months to 31 March 1996, the population grew from 1,723,400 to 1,755,500, an increase of 32,100 or 1.86%.

At 31 March 1996, there were 881,300 males and 874,300 females resident in Western Australia, a difference of 7,000 more males. Twelve months prior, there was a difference of 8,000 more males. The trend indicates a narrowing in the gap between the sexes.

1.1 ESTIMATED RESIDENT POPULATION

| Period | At end of period | | | Mean Population |
|------------------------|------------------|---------|----------------------|--------------------|
| | Males | Females | Persons ¹ | |
| | 000 | | | |
| Financial years | | | | |
| 1992-93 | 842.4 | 833.9 | 1 676.3 | 1 667.4 |
| 1993-94 | 854.6 | 846.4 | 1 701.1 | 1 688.5 |
| 1994-95 | 869.5 | 861.6 | 1 731.2 | 1 716.1 |
| Calendar years | | | | |
| 1993 | 847.9 | 839.5 | 1 687.4 | 1 677.1 |
| 1994 | 861.1 | 853.2 | 1 714.3 | 1 702.0 |
| 1995p | 876.9 | 869.5 | 1 746.4 | 1 731.2 |
| Quarters | | | | |
| Dec 94 | 861.1 | 853.2 | 1 714.3 | .. |
| Mar 95 | 865.7 | 857.7 | 1 723.4 | .. |
| Jun 95 | 869.5 | 861.6 | 1 731.2 | .. |
| Sep 95 p | 873.7 | 865.8 | 1 739.5 | .. |
| Dec 95 p | 876.9 | 869.5 | 1 746.4 | .. |
| Mar 96 p | 881.3 | 874.3 | 1 755.5 | .. |

¹ All estimates have been finalised using 1991 Census results
Reference: Australian Demographic Statistics (3101.0)

Analysis of Table 1.2

In the March quarter 1996 the total increase in population was 9,100. This was 2,200 or 32% more than the increase in the previous quarter and only 100 more than the March quarter 1995. Between December 1995 and March 1996 quarters, both net estimated overseas and interstate migration rose substantially.

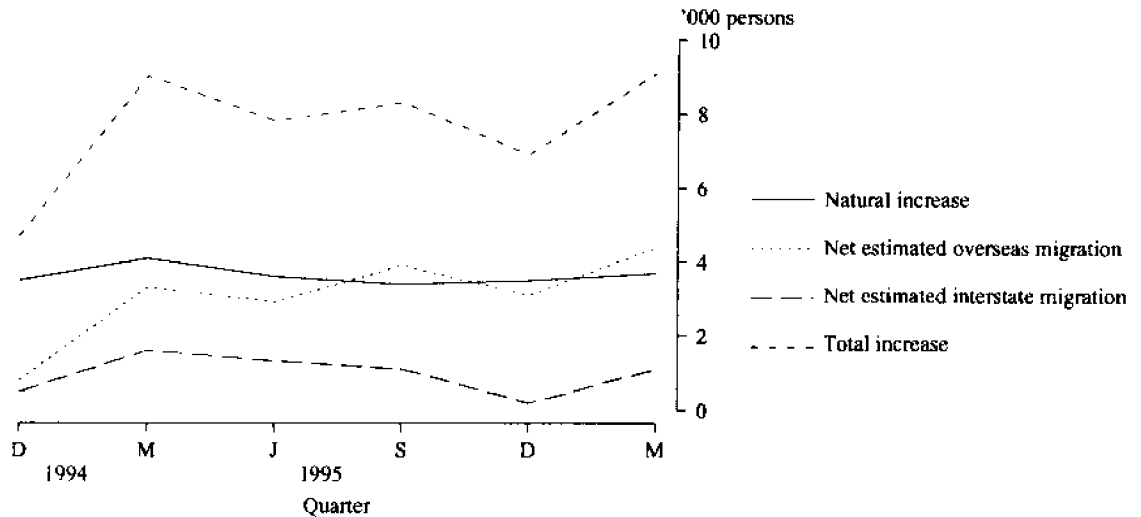
The increase in population for the calendar year 1995 exceeded the increase of 1994 by 5,100 or 19%. The most significant increase was in the category of net estimated overseas migration which increased by 5,200 or 65%.

1.2 COMPONENTS OF POPULATION CHANGE

| Period | Natural increase | Net estimated overseas migration ¹ | Net estimated interstate migration | Total increase |
|------------------------|------------------|---|------------------------------------|----------------|
| | | (000) | | |
| Financial years | | | | |
| 1992-93 | 14.7 | 4.6 | -0.3 | 19.0 |
| 1993-94 | 14.3 | 6.7 | 3.7 | 24.7 |
| 1994-95 | 14.7 | 10.5 | 4.9 | 30.1 |
| Calendar years | | | | |
| 1993 | 14.5 | 5.6 | 0.6 | 20.7 |
| 1994 | 14.5 | 8.0 | 4.5 | 26.9 |
| 1995 p | 14.6 | 13.2 | 4.3 | 32.0 |
| Quarters | | | | |
| Dec 94 | 3.5 | 0.8 | 0.5 | 4.7 |
| Mar 95 | 4.1 | 3.3 | 1.6 | 9.0 |
| Jun 95 | 3.6 | 2.9 | 1.3 | 7.8 |
| Sep 95 p | 3.4 | 3.9 | 1.1 | 8.3 |
| Dec 95 p | 3.5 | 3.1 | 0.2 | 6.9 |
| Mar 96 p | 3.7 | 4.4 | 1.1 | 9.1 |

¹ Includes an adjustment for 'category jumping'
Reference: Australian Demographic Statistics (3101.0)

**COMPONENTS OF POPULATION CHANGE
WESTERN AUSTRALIA**



Analysis of Table 1.3

The number of infant deaths in March quarter 1996 was the highest recorded in the last six quarters.

The number of live births dropped by 184 from March quarter 1995 whilst deaths increased by 274.

Marriages fell by 312 compared to a year ago but the number of divorces rose by 150.

1.3 REGISTRATION OF BIRTHS, DEATHS, MARRIAGES AND DIVORCES

| Period | Live births | Infant deaths | Total deaths | Marriages | Divorces |
|------------------------|-------------|---------------|--------------|-----------|----------|
| Financial years | | | | | |
| 1992-93 | 25 080 | 147 | 9 998 | 10 214 | 4 385 |
| 1993-94 | 25 309 | 148 | 10 522 | 10 316 | 4 934 |
| 1994-95 | 25 022 | 137 | 10 261 | 10 381 | 4 930 |
| Calendar years | | | | | |
| 1993 | 25 079 | 143 | 10 318 | 10 382 | 4 654 |
| 1994 | 25 124 | 137 | 10 295 | 10 366 | 5 024 |
| 1995 | 25 122 | 128 | 10 361 | 10 404 | 5 040 |
| Quarters | | | | | |
| Dec 94 | 6 000 | 29 | 2 537 | 3 305 | 1 358 |
| Mar 95 | 6 417 | 38 | 2 314 | 3 247 | 1 081 |
| Jun 95 | 6 348 | 32 | 2 598 | 2 367 | 1 158 |
| Sep 95 | 6 311 | 30 | 2 917 | 1 524 | 1 332 |
| Dec 95 | 6 046 | 28 | 2 532 | 3 266 | 1 469 |
| Mar 96 p | 6 233 | 54 | 2 588 | 2 935 | 1 231 |

Reference: Australian Demographic Statistics (3101.0)

Analysis of Table 1.4

The rate for infant deaths in March quarter 1996 was the highest recorded in the last six quarters, reflecting the increase in numbers.

The births and deaths rates rose slightly in March quarter 1996 compared to December quarter 1995.

Both divorce and marriage rates for March quarter 1996 fell from the preceding quarter as they did twelve months ago.

For more information regarding tables on Vital Statistics and Overseas Arrivals and Departures, please contact Mike Joske on (09) 360 5276.

1.4 RATES OF BIRTHS, DEATHS, MARRIAGES AND DIVORCES

| Period | Live births ¹ | Infant deaths ² | Total deaths ¹ | Marriages ¹ | Divorces ¹ |
|------------------------|--------------------------|----------------------------|---------------------------|------------------------|-----------------------|
| Financial years | | | | | |
| 1992-93 | 15.04 | 5.86 | 6.00 | 6.13 | 2.63 |
| 1993-94 | 14.99 | 5.85 | 6.23 | 6.11 | 2.92 |
| 1994-95 p | 14.58 | 5.48 | 5.98 | 6.05 | 2.87 |
| Calendar years | | | | | |
| 1993 | 14.95 | 5.70 | 6.15 | 6.19 | 2.78 |
| 1994 | 14.76 | 5.45 | 6.05 | 6.09 | 2.95 |
| 1995 p | 14.51 | 5.10 | 5.98 | 6.01 | 2.91 |
| Quarters | | | | | |
| Dec 94 | 14.02 | 4.83 | 5.93 | 7.72 | 3.17 |
| Mar 95 | 14.93 | 5.92 | 5.38 | 7.56 | 2.52 |
| Jun 95 | 14.70 | 5.04 | 6.02 | 5.48 | 2.68 |
| Sep 95 | 14.55 | 4.75 | 6.72 | 3.51 | 3.07 |
| Dec 95 | 13.88 | 4.63 | 5.81 | 7.50 | 3.37 |
| Mar 96 p | 14.24 | 8.66 | 5.91 | 6.70 | 2.81 |

¹ For financial and calendar years the rate is per '000 mean resident population. For quarters, the mean is averaged between the previous and current quarterly population.

² Infant deaths per 1,000 live births.

Reference: Australian Demographic Statistics (3101.0)

Analysis of Table 2.1

Total arrivals in August 1996 were down by 7% from the previous month but were up by 11% from August 1995.

Short-term arrivals of overseas visitors and Australian residents increased from August 1995 by 16% and 7% respectively.

Long-term overseas visitors dropped sharply between July and August 1996, a fall of 74%. The same movement was recorded between July and August 1995. Long-term arrivals of residents fell by 13% from July 1996.

Total departures in August 1996 fell by 1% from the previous month but were 17% higher than in August 1995.

Short-term departures of residents going overseas fell by 4,860 persons or 15% from July 1996 but increased by 4,100 persons or 18% on August 1995.

Short-term departures of overseas visitors rose by 17% from July 1996.

For more information regarding Overseas Arrivals and Departures please contact Mike Joske on (09) 360 5276.

2.1 OVERSEAS ARRIVALS AND DEPARTURES BY MONTH

| Period | SHORT-TERM ARRIVALS | | | LONG-TERM ARRIVALS | | Total Arrivals |
|------------------------|---------------------|----------------------|-------------------|----------------------|-------------------|----------------|
| | Permanent Arrivals | Australian residents | Overseas visitors | Australian residents | Overseas visitors | |
| ARRIVALS | | | | | | |
| Financial Years | | | | | | |
| 1993-94 | 7 740 | 269 890 | 297 750 | 8 900 | 7 430 | 591 700 |
| 1994-95 | 10 380 | 289 250 | 339 690 | 9 070 | 8 470 | 656 850 |
| 1995-96 | 11 320 | 308 110 | 361 180 | 8 600 | 10 170 | 699 380 |
| Months | | | | | | |
| Jun 95 | 970 | 19 740 | 24 790 | 640 | 370 | 46 510 |
| Jul 95 | 970 | 29 140 | 24 480 | 680 | 1 720 | 56 960 |
| Aug 95 | 950 | 26 650 | 24 840 | 620 | 450 | 53 520 |
| Sep 95 | 890 | 27 730 | 24 620 | 680 | 470 | 54 400 |
| Oct 95 | 1 070 | 35 360 | 3 330 | 700 | 570 | 68 020 |
| Nov 95 | 1 020 | 22 700 | 33 660 | 820 | 370 | 58 560 |
| Dec 95 | 1 040 | 18 450 | 46 800 | 1 260 | 510 | 68 070 |
| Jan 96 | 1 150 | 36 460 | 24 250 | 840 | 1 460 | 65 170 |
| Feb 96 | 940 | 2 650 | 39 640 | 630 | 2 530 | 64 380 |
| Mar 96 | 900 | 2 660 | 31 010 | 670 | 560 | 53 810 |
| Apr 96 | 850 | 23 670 | 32 270 | 580 | 660 | 58 020 |
| May 96 | 680 | 2 100 | 22 550 | 500 | 380 | 44 210 |
| Jun 96 | 860 | 25 530 | 26 720 | 630 | 500 | 54 250 |
| Jul 96 | 910 | 31 490 | 28 780 | 670 | 1 900 | 63 750 |
| Aug 96 | 840 | 28 570 | 28 950 | 580 | 500 | 59 430 |

| Period | SHORT-TERM DEPARTURES | | | LONG-TERM DEPARTURES | | Total Departures |
|------------------------|-----------------------|----------------------|-------------------|----------------------|-------------------|------------------|
| | Permanent Departures | Australian residents | Overseas visitors | Australian residents | Overseas visitors | |
| DEPARTURES | | | | | | |
| Financial Years | | | | | | |
| 1993-94 | 3 430 | 274 770 | 29 540 | 7 340 | 4 140 | 580 220 |
| 1994-95 | 3 580 | 292 270 | 343 610 | 7 560 | 4 710 | 651 730 |
| 1995-96 | 3 890 | 305 910 | 366 340 | 7 680 | 5 480 | 689 300 |
| Months | | | | | | |
| Jun 95 | 250 | 24 320 | 27 820 | 540 | 490 | 53 420 |
| Jul 95 | 320 | 30 370 | 22 890 | 590 | 500 | 54 670 |
| Aug 95 | 340 | 23 320 | 25 650 | 650 | 300 | 50 260 |
| Sep 95 | 250 | 29 110 | 23 430 | 520 | 320 | 53 640 |
| Oct 95 | 290 | 25 910 | 26 720 | 460 | 290 | 53 750 |
| Nov 95 | 320 | 22 200 | 30 630 | 500 | 580 | 54 230 |
| Dec 95 | 370 | 33 040 | 38 900 | 650 | 1 110 | 74 070 |
| Jan 96 | 410 | 9 640 | 37 530 | 1 010 | 380 | 58 970 |
| Feb 96 | 320 | 17 840 | 35 700 | 730 | 440 | 55 030 |
| Mar 96 | 350 | 25 730 | 32 970 | 750 | 400 | 60 200 |
| Apr 96 | 330 | 23 540 | 33 160 | 670 | 330 | 58 030 |
| May 96 | 370 | 25 720 | 27 520 | 630 | 270 | 54 500 |
| Jun 96 | 200 | 29 410 | 31 240 | 530 | 560 | 61 940 |
| Jul 96 | 340 | 32 280 | 25 420 | 640 | 560 | 59 240 |
| Aug 96 | 270 | 27 420 | 29 840 | 660 | 390 | 58 580 |

Reference: Unpublished table PMTR0001. Since figures have been rounded to the nearest ten, discrepancies may occur between sums of component items and totals.

Analysis of Table 2.2

The total of 28,950 short-term overseas arrivals in August 1996 was an increase of 4,110 persons or 16% over August 1995. This figure also represented a slight rise of 170 persons or 0.6% from July 1996.

The month of August in 1995 was the most popular month for short-term visitors from Japan, exceeding August 1996 by 6%. The month of August also recorded the highest number of arrivals so far in 1996.

Arrivals from the United Kingdom and Ireland and Singapore rose by 33% and 45% respectively from the previous month and by 31% and 27% compared to a year ago.

Indonesian arrivals in August 1996 were higher by 30% compared to August 1995 but dropped by 29% compared to July 1996.

2.2 SHORT-TERM OVERSEAS VISITOR ARRIVALS FROM SELECTED COUNTRIES¹

| Period | Country of origin | | | | | Total ² |
|------------------------|-------------------|--------------|--------|-----------|-----------|--------------------|
| | New Zealand | UK & Ireland | Japan | Indonesia | Singapore | |
| Financial years | | | | | | |
| 1993-94 | 25 150 | 57 480 | 27 530 | 27 840 | 50 700 | 297 750 |
| 1994-95 | 24 330 | 61 070 | 28 980 | 44 240 | 59 600 | 339 690 |
| 1995-96 | 24 200 | 59 220 | 30 120 | 49 260 | 64 690 | 361 180 |
| Months | | | | | | |
| Jun 95 | 1 870 | 2 200 | 1 380 | 4 100 | 7 700 | 24 790 |
| Jul 95 | 2 030 | 3 010 | 2 520 | 4 680 | 2 900 | 24 480 |
| Aug 95 | 2 160 | 2 660 | 3 950 | 2 820 | 3 780 | 24 840 |
| Sep 95 | 2 750 | 3 750 | 2 880 | 2 360 | 4 670 | 24 620 |
| Oct 95 | 2 100 | 5 780 | 2 050 | 2 990 | 4 010 | 30 330 |
| Nov 95 | 1 510 | 6 680 | 1 920 | 3 450 | 6 660 | 33 660 |
| Dec 95 | 2 360 | 8 370 | 2 970 | 7 650 | 11 040 | 46 800 |
| Jan 96 | 1 700 | 5 760 | 2 670 | 2 920 | 2 400 | 24 250 |
| Feb 96 | 1 760 | 6 440 | 3 190 | 8 150 | 6 460 | 39 640 |
| Mar 96 | 2 280 | 6 010 | 2 900 | 3 320 | 4 760 | 31 010 |
| Apr 96 | 2 260 | 5 990 | 2 460 | 3 360 | 5 760 | 32 270 |
| May 96 | 1 630 | 2 160 | 1 320 | 2 610 | 5 270 | 22 550 |
| Jun 96 | 1 660 | 2 610 | 1 290 | 4 950 | 6 970 | 26 720 |
| Jul 96 | 3 000 | 2 610 | 3 430 | 5 190 | 3 310 | 28 780 |
| Aug 96 | 2 100 | 3 480 | 3 720 | 3 670 | 4 800 | 28 950 |

¹ Comprises travellers whose intended or actual stay is less than twelve months.

² Total includes countries not listed in this table.

Reference: Unpublished table PMTR0013

Analysis of Table 2.3

There were 17,310 short-term overseas visitor arrivals for holiday in August 1996; a rise of 3,030 persons or 21% from July 1996 and an increase of 4,090 persons or 31% on August 1995.

The greatest increase of overseas visitors between July and August 1996 came from Singapore which rose by 2,170 persons or 147% from the preceding month and by 1,120 persons or 44% over August 1995.

The total of 3,300 persons from Japan in August 1996 was the highest recorded in 15 months.

Arrivals from Indonesia for a holiday dropped by 980 persons or 31% from the preceding month but were still 30% higher than August 1995.

Malaysian arrivals rose by 1,350 persons or 94% over July 1996 and were 40% higher than August 1995.

Holidaymakers from the United Kingdom and Ireland fell by 24% from July 1996. A similar pattern occurred between July and August 1995 when a fall of 34% was recorded.

2.3 SHORT TERM OVERSEAS VISITOR ARRIVALS BY AIR FROM SELECTED COUNTRIES: PURPOSE OF JOURNEY: HOLIDAY

| Period | Country of origin | | | | | | | | Total ¹ |
|------------------------|-------------------|--------------|-----------|--------|----------|-----------|----------|---------------|--------------------|
| | New Zealand | UK & Ireland | Indonesia | Japan | Malaysia | Singapore | Thailand | United States | |
| Financial years | | | | | | | | | |
| 1993-94 | 9 160 | 22 260 | 20 850 | 24 460 | 19 180 | 39 370 | 7 950 | 2 910 | 190 850 |
| 1994-95 | 7 720 | 19 290 | 33 350 | 24 640 | 19 200 | 45 100 | 7 180 | 2 760 | 193 880 |
| 1995-96 | 6 800 | 19 010 | 35 610 | 23 840 | 20 800 | 47 520 | 8 770 | 3 250 | 200 560 |
| Months | | | | | | | | | |
| Jun 95 | 680 | 640 | 3 200 | 1 160 | 1 530 | 6 270 | 380 | 130 | 15 670 |
| Jul 95 | 720 | 1 130 | 3 000 | 2 120 | 590 | 1 370 | 450 | 210 | 12 260 |
| Aug 95 | 740 | 750 | 1 710 | 2 820 | 2 000 | 2 530 | 480 | 40 | 13 220 |
| Sep 95 | 1 060 | 1 300 | 1 470 | 2 360 | 1 080 | 3 440 | 390 | 200 | 13 480 |
| Oct 95 | 560 | 1 940 | 1 810 | 1 730 | 1 690 | 2 650 | 1 210 | 310 | 15 640 |
| Nov 95 | 280 | 2 650 | 2 460 | 1 360 | 2 160 | 5 070 | 570 | 340 | 18 340 |
| Dec 95 | 450 | 2 220 | 6 640 | 2 640 | 1 010 | 9 240 | 880 | 410 | 28 500 |
| Jan 96 | 320 | 2 120 | 1 740 | 2 240 | 510 | 1 270 | 430 | 280 | 11 620 |
| Feb 96 | 640 | 1 990 | 6 400 | 2 390 | 2 840 | 4 320 | 460 | 140 | 23 030 |
| Mar 96 | 670 | 1 930 | 2 520 | 2 650 | 1 490 | 3 520 | 870 | 590 | 17 510 |
| Apr 96 | 540 | 1 660 | 2 050 | 1 750 | 2 410 | 4 330 | 1 620 | 170 | 17 140 |
| May 96 | 230 | 810 | 1 960 | 1 000 | 2 760 | 4 150 | 790 | 320 | 13 580 |
| Jun 96 | 580 | 500 | 3 850 | 780 | 2 240 | 5 640 | 610 | 250 | 16 240 |
| Jul 96 | 470 | 1 140 | 3 200 | 2 900 | 1 440 | 1 480 | 590 | 190 | 14 280 |
| Aug 96 | 580 | 870 | 2 220 | 3 300 | 2 790 | 3 650 | 980 | 100 | 17 310 |

¹ Total includes the countries listed here and all other countries not listed in this table.

Reference: Unpublished table PMTWAT31 for monthly figures and PMTRO031 for financial year figures.

Analysis of Table 2.4

The total of 27,420 short-term departures of residents for August 1996 was 18% higher than August 1995 but was 15% lower than July 1996.

Departures to the United Kingdom and Ireland in August 1996 fell by 36% from the previous month. This compares to a fall of 28% for the same months a year ago.

Departures to Indonesia were the highest recorded over 15 months and continued the trend of a large number of departures over the last three months.

Short-term departures to Malaysia and Singapore fell by 28% and 19% respectively from July 1996, repeating a similar pattern of twelve months ago.

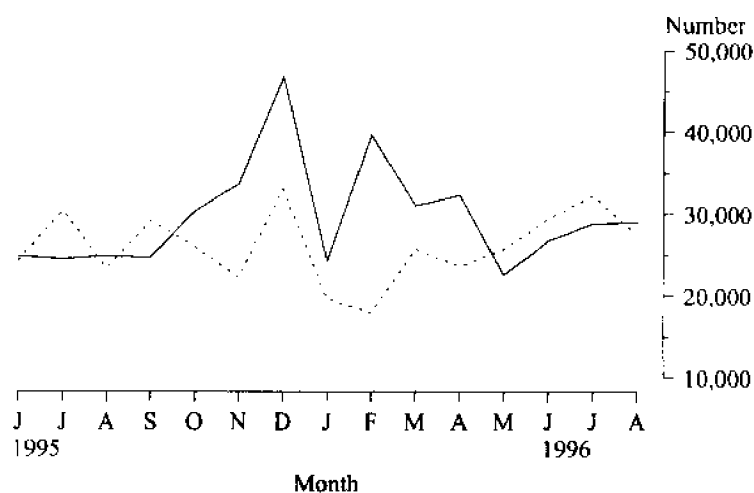
2.4 SHORT-TERM DEPARTURES OF RESIDENTS TO SELECTED DESTINATIONS

| Period | Country of destination | | | | | Total ¹ |
|------------------------|------------------------|--------------|-----------|----------|-----------|--------------------|
| | New Zealand | UK & Ireland | Indonesia | Malaysia | Singapore | |
| Financial years | | | | | | |
| 1993-94 | 22 020 | 38 580 | 64 720 | 23 420 | 24 170 | 274 770 |
| 1994-95 | 25 750 | 40 850 | 68 420 | 23 070 | 25 840 | 292 270 |
| 1995-96 | 25 100 | 44 070 | 68 860 | 22 780 | 29 430 | 305 910 |
| Months | | | | | | |
| Jun 95 | 1 220 | 4 450 | 4 860 | 1 380 | 2 390 | 24 320 |
| Jul 95 | 1 940 | 5 070 | 8 010 | 2 190 | 2 500 | 30 370 |
| Aug 95 | 1 600 | 3 650 | 5 920 | 1 440 | 1 940 | 23 320 |
| Sep 95 | 2 480 | 4 660 | 5 880 | 3 190 | 3 070 | 29 110 |
| Oct 95 | 2 160 | 2 860 | 7 330 | 1 870 | 2 750 | 25 990 |
| Nov 95 | 2 000 | 2 060 | 4 100 | 2 020 | 3 100 | 22 200 |
| Dec 95 | 4 100 | 3 800 | 5 650 | 2 820 | 3 030 | 33 040 |
| Jan 96 | 2 140 | 1 400 | 4 630 | 1 480 | 2 740 | 19 640 |
| Feb 96 | 2 290 | 1 680 | 3 720 | 1 040 | 1 990 | 17 840 |
| Mar 96 | 2 500 | 4 110 | 6 230 | 1 740 | 3 080 | 25 730 |
| Apr 96 | 1 820 | 3 330 | 5 360 | 1 460 | 1 770 | 23 540 |
| May 96 | 960 | 5 650 | 4 420 | 1 520 | 1 360 | 25 720 |
| Jun 96 | 1 100 | 5 770 | 7 610 | 2 030 | 2 090 | 29 410 |
| Jul 96 | 1 850 | 5 830 | 7 790 | 2 090 | 2 400 | 32 280 |
| Aug 96 | 1 900 | 3 760 | 8 100 | 1 510 | 1 950 | 27 420 |

¹ Total includes countries not listed in this table.

Reference: Unpublished table PMTR0013.

TOTAL SHORT TERM ARRIVALS OF OVERSEAS VISITORS AND DEPARTURES OF RESIDENTS BY MONTH



Source: Unpublished table PMTR0013

— Arrivals

..... Departures

Analysis of Table 2.5

Total short-term departures of residents for holidays overseas in August 1996 fell by 3,030 persons or 16% compared to July 1996. The August 1996 total of 16,080 persons represented a rise of 29% on August 1995.

Departures to all countries fell in August 1996 from the previous month except for Indonesia which rose by only 0.4%. Nevertheless, the August 1996 total of 6,710 departures to Indonesia was the second highest recorded in fifteen months since July month 1995.

Compared to August 1995, short-term departures to New Zealand increased by 71%, the United Kingdom and Ireland by 23%, Malaysia by 112% and the United States by 30%.

Departures to Singapore fell by 31% and Thailand by 35% compared to a year ago.

2.5 SHORT-TERM DEPARTURES OF RESIDENTS BY AIR TO SELECTED COUNTRIES: PURPOSE OF JOURNEY: HOLIDAY

| Period | Country of Destination | | | | | | | Total ¹ |
|------------------------|------------------------|--------------|-----------|----------|-----------|----------|---------------|--------------------|
| | New Zealand | UK & Ireland | Indonesia | Malaysia | Singapore | Thailand | United States | |
| Financial years | | | | | | | | |
| 1993-94 | 9 420 | 15 080 | 53 670 | 12 480 | 12 160 | 11 690 | 9 100 | 150 490 |
| 1994-95 | 11 100 | 18 430 | 55 070 | 11 480 | 13 220 | 12 560 | 9 940 | 160 730 |
| 1995-96 | 10 120 | 18 420 | 53 060 | 10 430 | 15 670 | 12 750 | 9 650 | 160 120 |
| Months | | | | | | | | |
| Jun 95 | 410 | 1 920 | 3 480 | 540 | 970 | 700 | 1 150 | 11 900 |
| Jul 95 | 810 | 2 310 | 6 760 | 1 110 | 1 180 | 1 800 | 980 | 17 540 |
| Aug 95 | 410 | 1 670 | 4 470 | 410 | 1 240 | 1 330 | 600 | 12 480 |
| Sep 95 | 1 500 | 2 340 | 4 770 | 1 880 | 1 730 | 2 000 | 1 420 | 17 560 |
| Oct 95 | 960 | 840 | 6 390 | 1 140 | 1 530 | 1 000 | 880 | 14 520 |
| Nov 95 | 690 | 580 | 3 120 | 900 | 2 110 | 550 | 340 | 10 550 |
| Dec 95 | 1 480 | 1 320 | 4 170 | 1 480 | 1 320 | 800 | 1 260 | 16 060 |
| Jan 96 | 890 | 750 | 3 250 | 520 | 1 140 | 530 | 820 | 9 660 |
| Feb 96 | 820 | 380 | 2 340 | 440 | 810 | 580 | 370 | 7 800 |
| Mar 96 | 1 070 | 1 580 | 4 520 | 580 | 1 910 | 820 | 760 | 13 000 |
| Apr 96 | 840 | 1 540 | 3 620 | 610 | 950 | 1 400 | 640 | 11 980 |
| May 96 | 350 | 2 690 | 3 310 | 460 | 630 | 710 | 690 | 12 330 |
| Jun 96 | 300 | 2 440 | 6 330 | 890 | 1 110 | 1 230 | 930 | 16 640 |
| Jul 96 | 960 | 3 020 | 6 680 | 1 040 | 1 320 | 1 080 | 1 720 | 19 110 |
| Aug 96 | 700 | 2 060 | 6 710 | 870 | 860 | 860 | 780 | 16 080 |

¹ Total includes countries not listed in this table.

Reference: Unpublished table PMTWAT31 for monthly figures and PMTRO031 for financial year figures.

2.6 TOURIST ACCOMMODATION

| Period | Hotels, Motels, Guest Houses with facilities | | | Caravan parks | | |
|------------------------|---|----------------------------|-------------------|--------------------|----------------------------|-------------------|
| | Guest rooms | Room occupancy rates | Guest arrivals | Number of sites | Site occupancy rates | Guest arrivals |
| | Number | % | '000 | Number | % | '000 |
| Financial years | | | | | | |
| 1993-94 ¹ | 14 754 | 57 | 2 153.8 | 29202 | 39 | 1250 |
| 1994-95 ¹ | 14 754 | 60 | 2 219.4 | 29 554 | 40 | 1 231 |
| 1995-96 ¹ | 15 085 | 60 | 2 256.1 | 29 952 | 40 | 1 299 |
| Months | | | | | | |
| Apr 95 | | 59 | 182 | | 41 | 116 |
| May 95 | | 57 | 173 | | 36 | 79 |
| Jun 95 | 14 754 | 57 | 166 | 29 554 | 40 | 100 |
| Jul 95 | | 55 | 178 | | 45 | 140 |
| Aug 95 | | 61 | 193 | | 44 | 138 |
| Sep 95 | 14 720 | 68 | 218 | 29 828 | 43 | 135 |
| Oct 95 | | 63 | 240 | | 39 | 112 |
| Nov 95 | | 59 | 194 | | 35 | 72 |
| Dec 95 | 14 924 | 51 | 197 | 30 063 | 38 | 105 |
| Jan 96 | | 52 | 203 | | 45 | 131 |
| Feb 96 | | 57 | 179 | | 37 | 73 |
| Mar 96 | 14 928 | 58 | 198 | 30 085 | 37 | 85 |
| Apr 96 | | 59 | 187 | | 41 | 125 |
| May 96 | | 56 | 171 | | 37 | 89 |
| Jun 96 | 15 085 | 55 | 167 | 29 952 | 40 | 98 |

| Period | Holiday Flats, Units, Houses | | | Visitor Hostels | | |
|------------------------|------------------------------|----------------------------|---------------|-----------------|---------------------------|--------------------|
| | Guest Units | Unit occupancy rates | Unit lettings | Bed Spaces | Bed occupancy rates | Bed-nights sold |
| | Number | % | '000 | Number | % | '000 |
| Financial years | | | | | | |
| 1993-94 ¹ | 2 224 | 55 | 96 | 3 119 | 38 | 416 |
| 1994-95 ¹ | 2 419 | 57 | 110 | 2 834 | 41 | 431 |
| 1995-96 ¹ | 2 687 | 57 | 134 | 3 171 | 43 | 478 |
| Months | | | | | | |
| Apr 95 | | 63 | 10 | | 48 | 40 |
| May 95 | | 45 | 8 | | 41 | 36 |
| Jun 95 | 2 419 | 45 | 8 | 2 834 | 41 | 35 |
| Jul 95 | | 56 | 11 | | 43 | 37 |
| Aug 95 | | 48 | 9 | | 38 | 34 |
| Sep 95 | 2 439 | 58 | 12 | 2 831 | 41 | 35 |
| Oct 95 | | 66 | 13 | | 44 | 41 |
| Nov 95 | | 55 | 11 | | 42 | 38 |
| Dec 95 | 2 581 | 61 | 12 | 3 033 | 43 | 40 |
| Jan 96 | | 73 | 12 | | 47 | 46 |
| Feb 96 | | 58 | 11 | | 44 | 40 |
| Mar 96 | 2 414 | 59 | 13 | 2 794 | 45 | 44 |
| Apr 96 | | 64 | 12 | | 46 | 44 |
| May 96 | | 43 | 10 | | 41 | 40 |
| Jun 96 | 2 687 | 46 | 10 | 3 171 | 41 | 39 |

¹ Number at 30 June.

Reference: Tourist Accommodation, Western Australia (8635.5)

For more information regarding this table, please contact Pam Prince on (09) 360 5207

Analysis of Table 3.1

The seasonally adjusted unemployment rate increased 0.1 percentage points to 7.6 per cent in October 1996. The trend estimate of the unemployment rate remained the same at 7.7 per cent.

The seasonally adjusted number of persons unemployed increased by 1,000 to 69,600, while the number of persons employed decreased by 800 to 844,700.

Western Australia's seasonally adjusted participation rate for October 1996 decreased by 0.1 percentage points to 66.2 per cent and continues to be the highest of all the states.

3.1 LABOUR FORCE STATUS (AGED 15 YEARS AND OVER): SEASONALLY ADJUSTED SERIES

| Month | Employed full-time | Total employed | Total unemployed | Unemployment rate | Participation rate |
|----------------|-----------------------|-------------------|---------------------|----------------------|-----------------------|
| | '000 | '000 | '000 | % | % |
| Males | | | | | |
| Dec 95 | 425.2 | 477.2 | 38.2 | 7.4 | 76.4 |
| Jan 96 | 424.9 | 476.0 | 40.9 | 7.9 | 76.5 |
| Feb 96 | 428.5 | 475.8 | 42.4 | 8.2 | 76.5 |
| Mar 96 | 426.9 | 477.9 | 42.6 | 8.2 | 76.7 |
| Apr 96 | 424.9 | 477.1 | 39.3 | 7.6 | 76.0 |
| May 96 | 426.4 | 478.8 | 40.9 | 7.9 | 76.3 |
| Jun 96 | 425.4 | 476.2 | 43.7 | 8.4 | 76.2 |
| Jul 96 | 432.9 | 482.5 | 39.9 | 7.6 | 76.4 |
| Aug 96 | 425.5 | 481.2 | 43.1 | 8.2 | 76.6 |
| Sep 96 | 426.3 | 480.1 | 41.4 | 7.9 | 76.0 |
| Oct 96 | 431.3 | 484.5 | 42.5 | 8.1 | 76.7 |
| Females | | | | | |
| Dec 95 | 185.2 | 349.9 | 29.6 | 7.8 | 55.8 |
| Jan 96 | 185.2 | 346.2 | 29.7 | 7.9 | 55.1 |
| Feb 96 | 194.3 | 359.1 | 29.6 | 7.6 | 56.9 |
| Mar 96 | 194.9 | 355.1 | 27.1 | 7.1 | 55.8 |
| Apr 96 | 197.0 | 346.2 | 24.2 | 6.5 | 54.0 |
| May 96 | 192.2 | 356.7 | 27.8 | 7.2 | 56.0 |
| Jun 96 | 194.6 | 354.4 | 30.4 | 7.9 | 55.9 |
| Jul 96 | 196.3 | 361.9 | 29.5 | 7.5 | 56.7 |
| Aug 96 | 203.3 | 369.8 | 28.3 | 7.1 | 57.6 |
| Sep 96 | 200.9 | 365.5 | 27.2 | 6.9 | 56.7 |
| Oct 96 | 193.2 | 360.2 | 27.1 | 7.0 | 55.8 |
| Persons | | | | | |
| Dec 95 | 610.5 | 827.1 | 67.8 | 7.6 | 66.0 |
| Jan 96 | 610.1 | 822.2 | 70.6 | 7.9 | 65.7 |
| Feb 96 | 622.8 | 834.9 | 71.9 | 7.9 | 66.7 |
| Mar 96 | 621.8 | 833.1 | 69.7 | 7.7 | 66.2 |
| Apr 96 | 621.9 | 823.3 | 63.4 | 7.2 | 64.9 |
| May 96 | 618.5 | 835.4 | 68.7 | 7.6 | 66.1 |
| Jun 96 | 620.0 | 830.6 | 74.2 | 8.2 | 66.0 |
| Jul 96 | 629.3 | 844.4 | 69.5 | 7.6 | 66.5 |
| Aug 96 | 628.8 | 851.1 | 71.4 | 7.7 | 67.0 |
| Sep 96 | 627.2 | 845.5 | 68.6 | 7.5 | 66.3 |
| Oct 96 | 624.5 | 844.7 | 69.6 | 7.6 | 66.2 |

Reference: The Labour Force, Australia Preliminary (6202.0)

Analysis of Table 3.2

3.2 LABOUR FORCE STATUS (AGED 15 YEARS AND OVER): TREND SERIES

Trend estimates for April 1996 to September 1996 have been revised.

For more information regarding these tables, please contact Lesley Martin on (09) 360 5320.

| Month | Employed full-time | Total employed | Total unemployed | Unemployment rate | Participation rate |
|----------------|--------------------|----------------|------------------|-------------------|--------------------|
| | '000 | '000 | '000 | % | % |
| Males | | | | | |
| Dec 95 | 427.4 | 477.5 | 39.2 | 7.6 | 76.6 |
| Jan 96 | 426.7 | 477.1 | 40.2 | 7.8 | 76.5 |
| Feb 96 | 426.2 | 476.8 | 41.0 | 7.9 | 76.5 |
| Mar 96 | 426.1 | 476.8 | 41.4 | 8.0 | 76.4 |
| Apr 96r | 426.4 | 477.3 | 41.6 | 8.0 | 76.3 |
| May 96r | 426.8 | 478.1 | 41.6 | 8.0 | 76.3 |
| Jun 96r | 427.2 | 479.0 | 41.6 | 8.0 | 76.3 |
| Jul 96r | 427.6 | 480.0 | 41.7 | 8.0 | 76.3 |
| Aug 96r | 428.1 | 481.0 | 41.9 | 8.0 | 76.4 |
| Sep 96r | 428.6 | 481.9 | 42.1 | 8.0 | 76.4 |
| Oct 96 | 429.1 | 482.8 | 42.4 | 8.1 | 76.4 |
| Females | | | | | |
| Dec 95 | 188.4 | 351.3 | 29.8 | 7.8 | 56.0 |
| Jan 96 | 189.5 | 351.5 | 29.1 | 7.6 | 55.8 |
| Feb 96 | 191.0 | 351.7 | 28.3 | 7.5 | 55.6 |
| Mar 96 | 192.7 | 352.2 | 27.7 | 7.3 | 55.5 |
| Apr 96r | 194.3 | 353.4 | 27.6 | 7.2 | 55.6 |
| May 96r | 195.7 | 355.5 | 27.8 | 7.3 | 55.8 |
| Jun 96r | 196.6 | 358.1 | 28.2 | 7.3 | 56.1 |
| Jul 96r | 197.4 | 360.7 | 28.4 | 7.3 | 56.4 |
| Aug 96r | 198.1 | 363.0 | 28.4 | 7.3 | 56.6 |
| Sep 96r | 198.4 | 364.8 | 28.2 | 7.2 | 56.7 |
| Oct 96 | 198.5 | 366.0 | 28.0 | 7.1 | 56.8 |
| Persons | | | | | |
| Dec 95 | 615.8 | 828.8 | 68.9 | 7.7 | 66.2 |
| Jan 96 | 616.1 | 828.6 | 69.3 | 7.7 | 66.1 |
| Feb 96 | 617.2 | 828.5 | 69.3 | 7.7 | 66.0 |
| Mar 96 | 618.8 | 829.0 | 69.1 | 7.7 | 65.9 |
| Apr 96r | 620.7 | 830.7 | 69.1 | 7.7 | 65.9 |
| May 96r | 622.4 | 833.6 | 69.4 | 7.7 | 66.0 |
| Jun 96r | 623.8 | 837.1 | 69.8 | 7.7 | 66.2 |
| Jul 96r | 625.0 | 840.7 | 70.2 | 7.7 | 66.3 |
| Aug 96r | 626.2 | 844.0 | 70.3 | 7.7 | 66.4 |
| Sep 96r | 627.1 | 846.7 | 70.3 | 7.7 | 66.5 |
| Oct 96 | 627.6 | 848.9 | 70.3 | 7.7 | 66.5 |

Reference: The Labour Force, Australia Preliminary (6202.0)

Analysis of Table 3.3

The total number of employees rose from 550,500 in March 1994 to 558,800 in March 1995. During this twelve month period, the public sector total number of employees rose by 3,600 to 157,600, and the private sector total number of employees showed an increase of 4,800 to 401,300.

3.3 NUMBER OF EMPLOYED WAGE AND SALARY EARNERS BY INDUSTRY AND SECTOR

| Particulars | Number of Employees | | | | Gross earnings |
|---|---------------------|--------------|--------------|--------------|------------------|
| | Mar 1994 | Sept 1994 | Dec 1994 | Mar 1995 | Mar quarter 1995 |
| | '000 | '000 | '000 | '000 | \$m |
| INDUSTRY | | | | | |
| Mining | 20.6 | 20.7 | 21.5 | 23.8 | 323.5 |
| Manufacturing | 58.5 | 59.7 | 57.0 | 56.7 | 449.9 |
| Electricity, gas and water | 8.7 | 8.4 | 8.2 | 8.0 | 69.1 |
| Construction | 28.3 | 26.0 | 26.3 | 28.0 | 246.6 |
| Wholesale trade | 39.9 | 38.9 | 38.1 | 40.0 | 301.0 |
| Retail trade | 78.8 | 81.8 | 82.5 | 80.9 | 334.9 |
| Transport and storage | 22.3 | 22.2 | 21.8 | 21.7 | 204.5 |
| Communication | 8.2 | 8.5 | 8.7 | 8.8 | 79.4 |
| Finance, property and business | 60.8 | 63.4 | 66.3 | 64.2 | 493.9 |
| Public administration and defence | 29.5 | 29.9 | 31.7 | 30.1 | 226.5 |
| Community services | 144.9 | 149.1 | 151.1 | 152.3 | 970.9 |
| Recreation, personal and other services | 48.4 | 42.3 | 44.1 | 42.8 | 193.9 |
| Total all industries¹ | 550.5 | 552.2 | 558.8 | 558.8 | 3 906.2 |
| SECTOR | | | | | |
| Private | 396.5 | 398.9 | 398.8 | 401.3 | 2 692.4 |
| Government | | | | | |
| Commonwealth | 22.0 | 21.5 | 22.1 | 22.3 | 198.6 |
| State | 118.7 | 118.5 | 125.3 | 122.7 | 937.0 |
| Local | 13.3 | 13.3 | 12.7 | 12.6 | 78.3 |
| Total Government | 154.0 | 153.2 | 160.1 | 157.6 | 1 213.8 |
| Total all sectors | 550.5 | 552.2 | 558.8 | 558.8 | 3 906.2 |

| Particulars | FEBRUARY 1994 | | | FEBRUARY 1995 | | |
|---|---------------|--------------|--------------|---------------|--------------|--------------|
| | Males | Females | Persons | Males | Females | Persons |
| INDUSTRY | | | | | | |
| Mining | 18.4 | 2.9 | 21.3 | 20.6 | 3.4 | 24.0 |
| Manufacturing | 46.2 | 13.7 | 59.9 | 44.0 | 13.2 | 57.2 |
| Electricity, gas and water | 7.8 | 0.9 | 8.8 | 7.0 | 1.0 | 8.0 |
| Construction | 22.9 | 5.6 | 28.5 | 23.1 | 4.1 | 27.2 |
| Wholesale trade | 28.1 | 11.7 | 39.8 | 27.5 | 12.9 | 40.4 |
| Retail trade | 33.0 | 44.1 | 77.1 | 33.4 | 46.5 | 80.0 |
| Transport and storage | 17.9 | 4.4 | 22.3 | 16.1 | 5.6 | 21.7 |
| Communication | 5.8 | 2.4 | 8.3 | 6.0 | 2.7 | 8.8 |
| Finance, property and business | 28.6 | 32.7 | 61.2 | 29.4 | 34.3 | 63.7 |
| Public administration and defence | 17.9 | 11.6 | 29.5 | 17.7 | 12.4 | 30.1 |
| Community services | 49.3 | 92.6 | 141.9 | 43.8 | 101.2 | 145.0 |
| Recreation, personal and other services | 19.7 | 26.6 | 46.3 | 18.1 | 24.9 | 43.0 |
| Total all industries¹ | 296.9 | 249.7 | 546.5 | 287.9 | 262.6 | 550.5 |
| SECTOR | | | | | | |
| Private | 218.2 | 175.5 | 393.8 | 211.8 | 187.8 | 399.6 |
| Government | | | | | | |
| Commonwealth | 13.8 | 9.0 | 22.8 | 13.1 | 9.1 | 22.2 |
| State | 56.4 | 60.2 | 116.6 | 55.3 | 61.0 | 116.2 |
| Local | 8.4 | 4.8 | 13.3 | 7.8 | 4.7 | 12.5 |
| Total Government | 78.6 | 74.1 | 152.7 | 76.1 | 74.8 | 150.9 |
| Total all sectors | 296.9 | 249.7 | 546.5 | 287.9 | 262.6 | 550.5 |

¹ Includes employees of government agencies classified to Agriculture, forestry, fishing and hunting.
Reference: Employed Wage and Salary Earners (6248.0)

Analysis of Table 3.4

3.4 AVERAGE WEEKLY EARNINGS OF EMPLOYEES

Over the past twelve months to August 1996, both Western Australian and Australian average weekly total earnings for full-time adult persons increased by 3.7%.

Western Australian average weekly total earnings for full-time adult persons in August 1996 were \$728.70, while the comparable Australian average earnings in August 1996 were \$716.90.

| Reference period | MALES | | Total earnings | Total earnings | |
|------------------|------------------------|--|----------------|----------------|-----------|
| | Full Time Adults | | | | All males |
| | Ordinary time earnings | | | | |
| | (dollars) | | | | |
| 19 May 95 | 701.8 | | 764.2 | 656.6 | |
| 18 Aug 95 | 716.8 | | 776.2 | 677.0 | |
| 17 Nov 95 | 730.0 | | 792.2 | 682.7 | |
| 16 Feb 96 | 749.7 | | 806.7 | 691.8 | |
| 17 May 96 | 745.9 | | 805.4 | 687.3 | |
| 16 Aug 96 | 748.5 | | 804.8 | 691.1 | |

| Reference period | FEMALES | | Total earnings | Total earnings | |
|------------------|------------------------|--|----------------|----------------|-------------|
| | Full Time Adults | | | | All females |
| | Ordinary time earnings | | | | |
| | (dollars) | | | | |
| 19 May 95 | 541.8 | | 557.4 | 403.9 | |
| 18 Aug 95 | 555.9 | | 568.7 | 401.3 | |
| 17 Nov 95 | 560.8 | | 574.4 | 406.5 | |
| 16 Feb 96 | 575.1 | | 586.7 | 414.9 | |
| 17 May 96 | 577.3 | | 588.8 | 410.6 | |
| 16 Aug 96 | 582.2 | | 595.0 | 411.3 | |

| Reference period | PERSONS | | Total earnings | Total earnings | |
|------------------|------------------------|--|----------------|----------------|---------------|
| | Full Time Adults | | | | All employees |
| | Ordinary time earnings | | | | |
| | (dollars) | | | | |
| 19 May 95 | 645.8 | | 691.9 | 539.9 | |
| 18 Aug 95 | 660.0 | | 702.9 | 544.4 | |
| 17 Nov 95 | 668.5 | | 713.1 | 548.4 | |
| 16 Feb 96 | 687.6 | | 728.4 | 560.8 | |
| 17 May 96 | 684.8 | | 726.8 | 552.5 | |
| 16 Aug 96 | 688.2 | | 728.7 | 549.9 | |

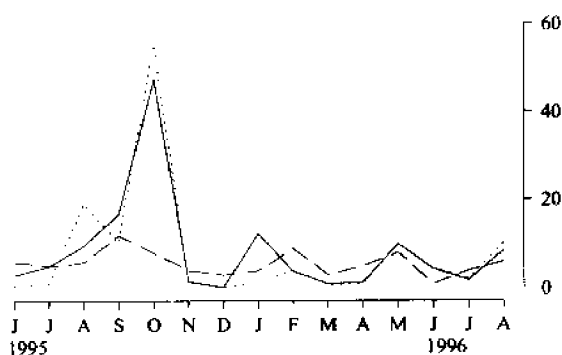
Reference: Average Weekly Earnings, States and Australia, (6302.0)

3.5 INDUSTRIAL DISPUTES CAUSING STOPPAGE OF WORK

| Period | Number of disputes | Workers Involved | | Total | Working days lost |
|----------------------|--------------------|------------------|------------|-------|-------------------|
| | | Directly | Indirectly | | |
| | Number | '000 | '000 | '000 | '000 |
| Calendar year | | | | | |
| 1993 | 111 | 27.4 | 0.2 | 27.6 | 29.5 |
| 1994 | 82 | 15.7 | 0.2 | 15.9 | 27.4 |
| 1995 | 70 | 99.7 | 0.0 | 99.7 | 101.6 |
| Months | | | | | |
| Jun 95 | 6 | 0.8 | — | 0.8 | 3.1 |
| Jul 95 | 5 | 1.1 | — | 1.1 | 5.1 |
| Aug 95 | 6 | 19.8 | — | 19.8 | 9.7 |
| Sep 95 | 12 | 10.4 | — | 10.4 | 17.0 |
| Oct 95 | 8 | 55.5 | — | 55.5 | 47.6 |
| Nov 95 | 4 | 1.2 | — | 1.2 | 1.6 |
| Dec 95 | 3 | 0.4 | — | 0.4 | 0.2 |
| Jan 96 | 4 | 1.5 | — | 1.5 | 12.4 |
| Feb 96 | 9 | 4.0 | — | 4.0 | 3.9 |
| Mar 96 | 3 | 0.9 | — | 0.9 | 1.0 |
| Apr 96 | 5 | 1.1 | — | 1.1 | 1.4 |
| May 96 | 8 | 10.0 | — | 10.0 | 9.9 |
| Jun 96 | 1 | 4.4 | — | 4.4 | 4.4 |
| Jul 96 | 4 | 2.1 | — | 2.1 | 1.8 |
| Aug 96 | 6 | 10.2 | — | 10.2 | 8.5 |

Reference: Industrial Disputes, Unpublished ABS Data.

INDUSTRIAL DISPUTES



Source: Unpublished ABS data

— Working Days Lost ('000)
 Workers involved Directly ('000)
 - - - Number of Disputes

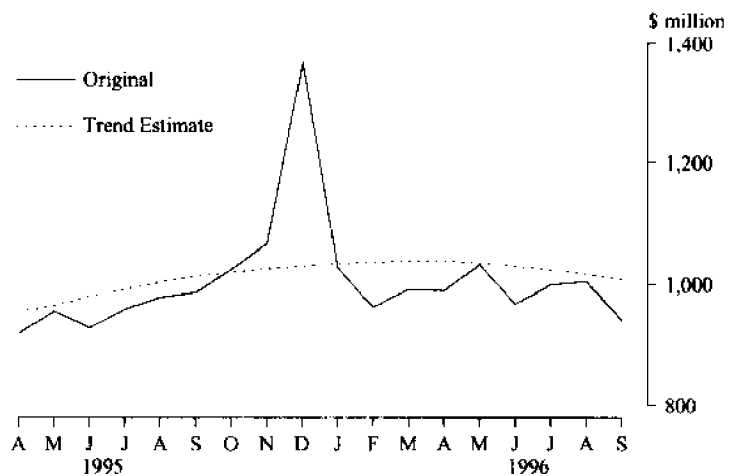
4.1 MONTHLY RETAIL TURNOVER : ORIGINAL ESTIMATES

| Months | Food | Department | Clothing and soft goods | Other Household | Recreational |
|--------|-------|------------|-------------------------|-----------------|--------------|
| Sep 95 | 430.0 | 84.7 | 61.1 | 109.4 | 52.5 |
| Oct 95 | 436.2 | 93.2 | 64.3 | 122.3 | 54.2 |
| Nov 95 | 452.7 | 107.4 | 66.5 | 129.8 | 58.9 |
| Dec 95 | 509.3 | 182.2 | 86.3 | 163.4 | 88.6 |
| Jan 96 | 451.4 | 83.3 | 59.3 | 111.5 | 55.5 |
| Feb 96 | 433.9 | 74.8 | 49.5 | 109.8 | 50.3 |
| Mar 96 | 445.0 | 82.5 | 55.4 | 101.0 | 53.0 |
| Apr 96 | 423.7 | 91.6 | 62.5 | 102.1 | 55.9 |
| May 96 | 436.6 | 99.9 | 69.6 | 108.3 | 57.5 |
| Jun 96 | 400.6 | 90.3 | 67.5 | 108.0 | 50.5 |
| Jul 96 | 420.5 | 93.6 | 64.7 | 127.7 | 53.4 |
| Aug 96 | 431.1 | 94.2 | 60.7 | 130.6 | 52.1 |
| Sep 96 | 406.6 | 82.2 | 55.9 | 111.5 | 51.2 |

| Months | Other | Totals | | | |
|--------|-------|--------------------------|----------|---------------------|-----------------|
| | | Hospitality and services | Original | Seasonally adjusted | Trend estimates |
| Sep 95 | 79.9 | 169.9 | 987.5 | 1 006.7 | 1 013.5 |
| Nov 95 | 80.7 | 170.4 | 1 066.4 | 1 015.6 | 1 026.0 |
| Dec 95 | 123.0 | 191.2 | 1 367.4 | 1 041.8 | 1 030.5 |
| Jan 96 | 84.8 | 173.7 | 1 027.0 | 1 051.2 | 1 034.6 |
| Feb 96 | 79.6 | 164.2 | 962.1 | 1 041.4 | 1 037.0 |
| Mar 96 | 80.5 | 175.3 | 992.7 | 1 040.3 | 1 038.7r |
| Apr 96 | 89.6 | 164.6 | 990.0 | 1 030.3 | 1 037.9r |
| May 96 | 98.4 | 162.3 | 1 032.6 | 1 034.8 | 1 034.8r |
| Jun 96 | 92.6 | 158.5 | 968.0 | 1 021.5 | 1 029.7r |
| Jul 96 | 88.5 | 150.6 | 999.0 | 1 018.0 | 1 023.4r |
| Aug 96 | 84.0 | 151.8 | 1 004.5 | 1 049.7 | 1 015.9r |
| Sep 96 | 81.0 | 151.4 | 939.8 | 974.4 | 1 007.3 |

Reference: Retail Trade, Australia (8501.0)

MONTHLY RETAIL TURNOVER WESTERN AUSTRALIA



Source: Retail Trade, Australia (8501.0)

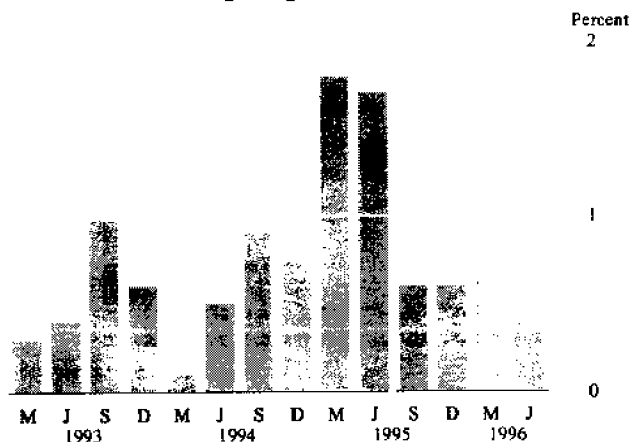
4.2 CONSUMER PRICE INDEX: PERTH

| Period | Food | Clothing | Housing | Household equipment and operation | Transportation |
|--|-------|----------|---------|-----------------------------------|----------------|
| (Base of each index: Year 1989-90 = 100.0) | | | | | |
| Financial Years | | | | | |
| 1993-94 | 110.0 | 108.2 | 87.3 | 108.2 | 114.4 |
| 1994-95 | 113.4 | 107.4 | 94.0 | 109.0 | 119.0 |
| 1995-96 | 116.8 | 107.0 | 100.9 | 111.2 | 123.4 |
| Quarters | | | | | |
| Jun 95 | 115.7 | 107.5 | 99.0 | 110.0 | 121.4 |
| Sep 95 | 116.6 | 106.9 | 100.0 | 110.5 | 123.4 |
| Dec 95 | 115.8 | 107.3 | 100.8 | 110.9 | 123.1 |
| Mar 96 | 116.9 | 106.8 | 101.2 | 111.1 | 123.2 |
| Jun 96 | 117.8 | 107.0 | 101.6 | 112.3 | 123.9 |
| Sep 96 | 120.3 | 106.4 | 101.0 | 112.7 | 122.0 |

| Period | Tobacco and alcohol | Health and personal care | Recreation and education | All groups |
|--|---------------------|--------------------------|--------------------------|------------|
| (Base of each index: Year 1989-90 = 100.0) | | | | |
| Financial years | | | | |
| 1993-94 | 128.8 | 123.8 | 107.6 | 108.5 |
| 1994-95 | 136.8 | 130.4 | 109.6 | 112.3 |
| 1995-96 | 145.9 | 138.6 | 114.1 | 116.7 |
| Quarters | | | | |
| Jun 95 | 140.2 | 135.7 | 112.3 | 114.9 |
| Sep 95 | 140.6 | 135.7 | 112.1 | 115.6 |
| Dec 95 | 145.6 | 137.2 | 113.8 | 116.3 |
| Mar 96 | 147.5 | 140.4 | 115.5 | 117.1 |
| Jun 96 | 150.0 | 141.1 | 114.8 | 117.9 |
| Sep 96 | 151.3 | 144.1 | 115.1 | 118.3 |

Reference: Consumer Price Index (6401.0)

CPI ALL GROUPS: PERTH
Percentage change from previous quarter



5.1 NEW RESIDENTIAL BUILDING APPROVED

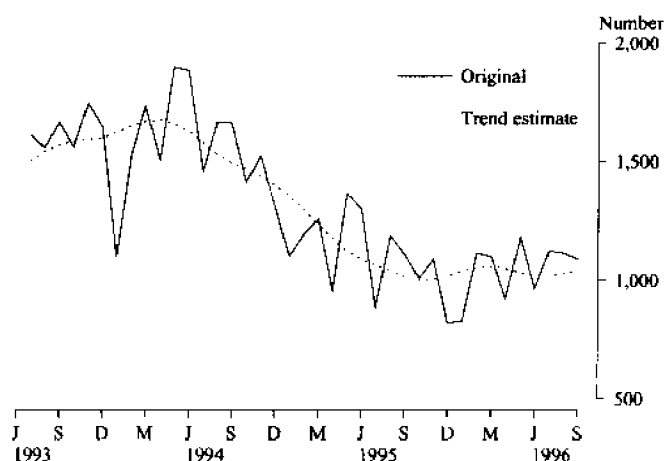
For more information about this table,
call Phil Smythe on (09) 360 5932

| Period | Houses | | Other Residential Buildings | | Total ¹ | |
|------------------------|----------------|---------|-----------------------------|-------|--------------------|---------|
| | Dwelling Units | Value | Dwelling Units | Value | Dwelling Units | Value |
| | Number | \$m | Number | \$m | Number | \$m |
| Financial years | | | | | | |
| 1993-94 | 19 437 | 1 503.7 | 7 144 | 461.0 | 26 776 | 1 964.7 |
| 1994-95 | 16 207 | 1 354.3 | 6 105 | 420.3 | 22 427 | 1 774.6 |
| 1995-96 | 12 211 | 1 148.3 | 3 527 | 272.3 | 15 853 | 1 420.7 |
| Months | | | | | | |
| Jul 95 | 883 | 77.8 | 316 | 23.1 | 1 203 | 100.9 |
| Aug 95 | 1 189 | 104.8 | 399 | 30.6 | 1 596 | 135.4 |
| Sep 95 | 1 111 | 99.2 | 293 | 22.9 | 1 410 | 122.1 |
| Oct 95 | 1 008 | 96.6 | 253 | 20.4 | 1 265 | 117.0 |
| Nov 95 | 1 087 | 99.1 | 286 | 22.7 | 1 378 | 121.8 |
| Dec 95 | 819 | 79.5 | 168 | 12.7 | 995 | 92.2 |
| Jan 96 | 827 | 82.5 | 410 | 33.2 | 1 241 | 115.7 |
| Feb 96 | 1 115 | 105.1 | 342 | 25.5 | 1 482 | 130.6 |
| Mar 96 | 1 101 | 104.5 | 362 | 33.7 | 1 501 | 138.2 |
| Apr 96 | 922 | 90.9 | 244 | 17.3 | 1 169 | 108.1 |
| May 96 | 1 183 | 114.3 | 227 | 15.0 | 1 420 | 129.2 |
| Jun 96 | 966 | 94.0 | 227 | 15.3 | 1 195 | 109.3 |
| Jul 96 | 1 124 | 104.1 | 136 | 8.7 | 1 265 | 112.8 |
| Aug 96 | 1 114 | 108.9 | 118 | 9.8 | 1 239 | 118.7 |
| Sep 96 | 1 089 | 106.9 | 111 | 7.8 | 1 210 | 114.7 |

¹ Includes conversions

Reference: Building Approvals, Western Australia (8731.5)

NEW HOUSES APPROVED
WESTERN AUSTRALIA



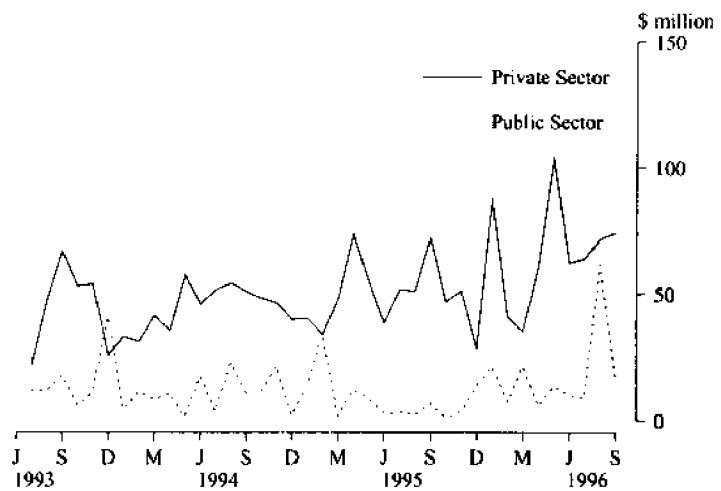
Source: Building Approvals, Western Australia (8731.5)

5.2 NON-RESIDENTIAL BUILDING APPROVED

| Period | Private | Public | Total |
|------------------------|---------|--------|-------|
| (\$ million) | | | |
| Financial years | | | |
| 1993-94 | 513.1 | 153.9 | 667.0 |
| 1994-95 | 580.9 | 147.3 | 728.2 |
| 1995-96 | 692.0 | 111.1 | 803.1 |
| Months | | | |
| Jul 95 | 51.9 | 3.2 | 55.1 |
| Aug 95 | 51.0 | 2.2 | 53.2 |
| Sep 95 | 72.2 | 6.8 | 79.0 |
| Oct 95 | 47.1 | 1.4 | 48.5 |
| Nov 95 | 51.2 | 3.4 | 54.7 |
| Dec 95 | 28.7 | 14.2 | 42.9 |
| Jan 96 | 86.9 | 21.3 | 108.2 |
| Feb 96 | 41.3 | 7.3 | 48.6 |
| Mar 96 | 35.5 | 21.4 | 56.9 |
| Apr 96 | 60.8 | 5.7 | 66.5 |
| May 96 | 103.4 | 14.0 | 117.4 |
| June 96 | 62.1 | 10.0 | 72.1 |
| Jul 96 | 63.9 | 8.7 | 72.6 |
| Aug 96 | 71.7 | 61.7 | 133.4 |
| Sep 96 | 74.1 | 17.8 | 91.9 |

Reference: Building Approvals, Western Australia (8731.5)

NON-RESIDENTIAL BUILDING APPROVED
WESTERN AUSTRALIA

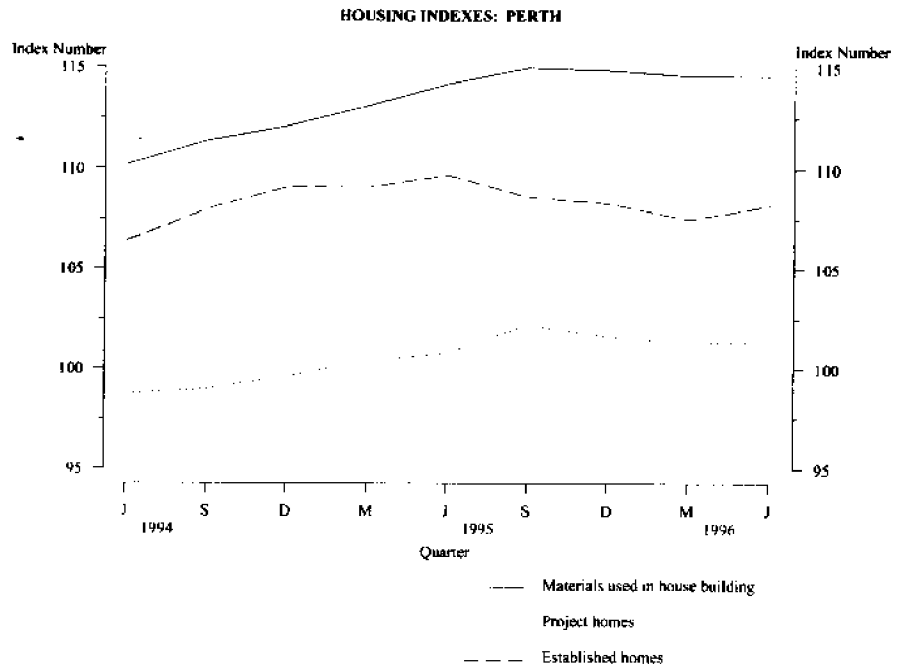


Source: Building Approvals, Western Australia (8731.5)

5.3 SELECTED HOUSING PRICE INDEXES: PERTH

| Period | Materials used in house building | Project homes | Established homes |
|---------------------------------------|----------------------------------|---------------|-------------------|
| (Base of each index: 1989-90 = 100.0) | | | |
| Financial years | | | |
| 1993-94 | 109.1 | 96.2 | 104.7 |
| 1994-95 | 112.7 | 100.0 | 109.0 |
| 1995-96 | 114.7 | 101.6 | 108.2 |
| Quarters | | | |
| Jun 95 | 114.2 | 100.8 | 109.7 |
| Sep 95 | 115.0 | 102.2 | 108.6 |
| Dec 95 | 114.9 | 101.6 | 108.3 |
| Mar 96 | 114.6 | 101.3 | 107.5 |
| Jun 96 | 114.6 | 101.4 | 108.2 |
| Sep 96 | 115.0 | n.a. | n.a. |

References: Price Index of Materials Used in House Building (6408.0); House Price Indexes, (6416.0)



5.4 PRICE INDEX OF MATERIALS USED IN BUILDING OTHER THAN HOUSE BUILDING: PERTH

| Period | Special Series | | | |
|------------------------------------|----------------|----------------------|---------------------|--------------------|
| | All groups | Electrical materials | Mechanical services | Plumbing materials |
| (Base of each index 1989-90 = 100) | | | | |
| Financial Years | | | | |
| 1993-94 | 107.1 | 101.9 | 104.2 | 105.1 |
| 1994-95 | 110.1 | 107.3 | 106.8 | 114.4 |
| 1995-96 | 113.2 | 113.0 | 112.3 | 120.1 |
| Months | | | | |
| Jul 95 | 112.7 | 112.6 | 109.9 | 120.4 |
| Aug 95 | 112.9 | 113.1 | 109.8 | 121.0 |
| Sep 95 | 112.6 | 113.2 | 109.8 | 119.9 |
| Oct 95 | 113.1 | 112.9 | 111.5 | 120.7 |
| Nov 95 | 113.1 | 112.6 | 112.1 | 120.0 |
| Dec 95 | 113.2 | 112.6 | 112.3 | 119.8 |
| Jan 96 | 113.3 | 112.5 | 112.4 | 120.0 |
| Feb 96 | 113.4 | 112.5 | 112.9 | 120.0 |
| Mar 96 | 113.4 | 112.8 | 113.4 | 119.7 |
| Apr 96 | 113.5 | 113.5 | 114.4 | 118.9 |
| May 96 | 113.6 | 114.0 | 114.5 | 120.3 |
| Jun 96 p | 113.5 | 113.9 | 114.6 | 120.4 |
| Jul 96 p | 113.9 | 112.6 | 114.3 | 117.3 |
| Aug 96 p | 114.0 | 110.3 | 114.1 | 117.4 |
| Sep 96 p | 114.2 | 110.2 | 113.5 | 117.9 |

Reference: Price Index of Materials Used in Building Other Than House Building (6407.0)

| Period | Selected Major Building Materials | | | | |
|------------------------------------|-----------------------------------|-------------|----------------------|------------------|-------------------|
| | Structural timber | Clay bricks | Ready mixed concrete | Structural steel | Aluminium windows |
| (Base of each index 1989-90 = 100) | | | | | |
| Financial years | | | | | |
| 1993-94 | 110.6 | 113.9 | 116.6 | 100.4 | 104.4 |
| 1994-95 | 110.6 | 118.0 | 117.8 | 103.6 | 112.4 |
| 1995-96 | 109.3 | 120.7 | 115.0 | 107.5 | 118.1 |
| Months | | | | | |
| Jul 95 | 109.9 | 120.2 | 116.0 | 105.7 | 118.2 |
| Aug 95 | 109.7 | 120.2 | 117.8 | 106.0 | 118.2 |
| Sep 95 | 109.7 | 120.2 | 115.0 | 105.9 | 118.2 |
| Oct 95 | 109.6 | 120.2 | 115.0 | 106.9 | 118.2 |
| Nov 95 | 109.8 | 120.2 | 114.6 | 107.3 | 118.2 |
| Dec 95 | 109.6 | 120.2 | 114.4 | 107.7 | 118.2 |
| Jan 96 | 109.2 | 120.2 | 114.4 | 108.2 | 118.2 |
| Feb 96 | 109.1 | 120.2 | 114.1 | 108.2 | 118.2 |
| Mar 96 | 109.1 | 120.2 | 114.1 | 108.2 | 118.2 |
| Apr 96 | 108.6 | 120.2 | 114.7 | 108.2 | 118.2 |
| May 96 | 108.6 | 123.4 | 114.7 | 108.8 | 118.2 |
| Jun 96 p | 108.6 | 123.4 | 114.7 | 108.8 | 116.4 |
| Jul 96 p | 108.6 | 123.4 | 119.8 | 108.8 | 116.4 |
| Aug 96 p | 105.9 | 123.4 | 119.5 | 109.7 | 116.4 |
| Sep 96 p | 105.9 | 123.6 | 119.4 | 111.2 | 116.4 |

Reference: Price Index of Materials Used in Building Other Than House Building (6407.0)

6.1 LIVESTOCK SLAUGHTERED

| Period | Cattle | | Total | Calves | Sheep | Lambs | Pigs |
|------------------------|-------------------------|---------------|-------|--------|-------|-------|------|
| | Bulls, bullocks, steers | Cows, heifers | | | | | |
| '000 | | | | | | | |
| Financial years | | | | | | | |
| 1993-94 | 271 | 168 | 439 | 4 | 2 952 | 1 553 | 550 |
| 1994-95 | 244 | 186 | 430 | 4 | 2 438 | 1 264 | 604 |
| 1995-96p | 233 | 192 | 426 | 3 | 2 267 | 1 303 | 571 |
| Months | | | | | | | |
| Aug 95 | 19 | 15 | 34 | — | 191 | 92 | 52 |
| Sep 95 | 17 | 18 | 35 | — | 162 | 150 | 51 |
| Oct 95 | 21 | 17 | 38 | — | 195 | 153 | 49 |
| Nov 95 | 28 | 16 | 44 | — | 233 | 127 | 47 |
| Dec 95 | 23 | 17 | 40 | — | 196 | 79 | 42 |
| Jan 96 | 19 | 19 | 38 | - | 199 | 75 | 40 |
| Feb 96 | 20 | 23 | 43 | - | 196 | 89 | 47 |
| Mar 96 | 19 | 18 | 36 | - | 194 | 110 | 49 |
| Apr 96 | 17 | 13 | 30 | - | 183 | 114 | 47 |
| May 96 | 17 | 14 | 31 | - | 207 | 142 | 51 |
| June 96 | 16 | 12 | 28 | - | 167 | 118 | 45 |
| Jul 96 | 14 | 13 | 27 | - | 175 | 145 | 49 |
| Aug 96 | 16 | 15 | 31 | - | 201r | 122 | 48 |
| Sep 96 | 18 | 17 | 35 | 1 | 218 | 152 | 43 |

Reference: Livestock Products (7215.0)

6.2 MEAT PRODUCED

| Period | Beef | Veal | Mutton | Lamb | Pigmeat |
|------------------------|---------|------|--------|--------|---------|
| tonnes | | | | | |
| Financial years | | | | | |
| 1993-94 | 101 513 | 296 | 61 731 | 24 936 | 32 423 |
| 1994-95 | 97 140 | 250r | 47 776 | 18 955 | 37 109 |
| 1995-96p | 97 059 | 187 | 44 737 | 22 171 | 35 437 |
| Months | | | | | |
| Aug 95 | 7 515 | 19 | 3 822 | 1 609 | 3 227 |
| Sep 95 | 7 872 | 16 | 3 094 | 2 494 | 3 144 |
| Oct 95 | 9 292 | 16 | 3 875 | 2 438 | 3 013 |
| Nov 95 | 10 283 | 17 | 4 518 | 2 069 | 2 888 |
| Dec 95 | 9 066 | 17 | 3 926 | 1 200 | 2 524 |
| Jan 96 | 8 359 | 16 | 3 995 | 1 323 | 2 497 |
| Feb 96 | 9 719 | 14 | 3 851 | 1 581 | 2 909 |
| Mar 96 | 8 297 | 11 | 3 839 | 1 954 | 3 009 |
| Apr 96 | 6 984 | 11 | 3 600 | 2 017 | 2 907 |
| May 96 | 7 037 | 14 | 4 166 | 2 445 | 3 233 |
| Jun 96 | 6 485 | 19 | 3 271 | 2 078 | 2 762 |
| Jul 96 | 5 862 | 21 | 3 407 | 2 448 | 2 900 |
| Aug 96 | 6 857 | 21 | 3904r | 2 056 | 2 924 |
| Sep 96 | 8 039 | 27 | 4 066 | 2 568 | 2 999 |

Reference: Livestock Products (7215.0)

For more information regarding these tables, please contact Peter Hodgson on (09) 360 5180.

6.3 WOOL RECEIVALS¹ and LIVE SHEEP EXPORTS

| Period | Receivals of taxable wool by brokers and dealers | | Export of live sheep | | |
|------------------------|---|---------|----------------------|-------------|--------------|
| | bales | tonnes | Number | Gross Value | Gross Weight |
| | | | '000 | \$'000 | '000t |
| Financial years | | | | | |
| 1992-93 | 1 115 307 | 198 756 | 3 681.0 | 89 079 | 192.5 |
| 1993-94 | 1 196 990 | 212 670 | 4 524.0 | 127 564 | 238.0 |
| 1994-95 | 972 837 | 172 575 | 3 864.8 | 127 517 | 193.1 |
| Months | | | | | |
| Aug 95 | 125 248 | 22 416 | 418.9 | 17 363 | 19.7 |
| Sep 95 | 110 924 | 19 676 | 415.7 | 16 628 | 19.9 |
| Oct 95 | 118 670 | 21 125 | 342.0 | 13 360 | 16.6 |
| Nov 95 | 87 099 | 15 520 | 311.9 | 11 018 | 15.8 |
| Dec 95 | 38 393 | 6 799r | 341.6 | 13 677 | 16.5 |
| Jan 96 | 62 665 | 11 173 | 387.8 | 15 628 | 20.0 |
| Feb 96 | 93 367 | 16 748 | 359.6 | 14 112 | 18.5 |
| Mar 96 | 92 096 | 16 422 | 517.4 | 19 807 | 26.4 |
| Apr 96 | 71 694 | 12 719 | 306.4 | 11 150 | 15.8 |
| May 96 | 52 751 | 9 326 | 523.2 | 17 453 | 26.2 |
| Jun 96 | 243 10r | 42 84r | 236.1 | 8 320 | 10.3 |
| Jul 96 | 53 172 | 9 484 | 209.4 | 7 540 | 10.3 |
| Aug 96 | n.y.a. | n.y.a. | 269.7 | 9 659 | 12.7 |
| Sep 96 | n.y.a. | n.y.a. | 441.0 | 15 995 | 22.0 |

¹ Source: National Council of Wool Selling Brokers

Reference: FTRACCS Trade Statistics

For more information regarding these tables, please contact Pam Prince on (09) 360 5207

6.4 ENERGY PRODUCTION

| Period | Coal ¹ | Electricity generated | Gas for distribution ² | Crude oil ^{3,4} | Natural gas ⁴ |
|------------------------|-------------------|--------------------------|--------------------------------------|--------------------------|--------------------------|
| | '000 tonnes | million kWh | million MJ | mega-litres | million m ³ |
| Financial years | | | | | |
| 1993-94 | 5 151 | 15 755 | 172 432 | 7 639 | 13 659 |
| 1994-95 | 5 882 | 16 756 | 186 658 | 12 680 | 15 714 |
| 1995-96 | 5 897 | 17 422 | 181 710 | 9 676 | 16 766 |
| Months | | | | | |
| Sep 95 | 567 | 1 370 | 14 543 | 3 421 | 4 396 |
| Oct 95 | 496 | 1 399 | 15 441 | | |
| Nov 95 | 455 | 1 394 | 14 709 | | |
| Dec 95 | 613 | 1 477 | 14 416 | 2 740 | 4 253 |
| Jan 96 | 505 | 1 537 | 15 635 | | |
| Feb 96 | 445 | 1 532 | 15 707 | | |
| Mar 96 | 588 | 1 514 | 16 638 | 3 708 | 4 136 |
| Apr 96 | 413 | 1 366 | 15 305 | | |
| May 96 | 487 | 1 475 | 16 609 | | |
| Jun 96 | 569 | 1 456 | 16 614 | 4 204 | 4 208 |
| Jul 96 | 379 | 1 523 | 17 292 | | |
| Aug 96 | 414 | 1 473 | 17 097 | | |
| Sep 96 | 469 | 1 379 | 15 454 | n.y.a. | n.y.a. |

¹ Source: Department of Minerals and Energy.

² Available for issue through mains.

³ Includes condensate.

⁴ Source: Australian Bureau of Agricultural and Resource Economics.

6.5 MINERAL EXPLORATION: EXPENDITURE BY TYPE OF MINERAL SOUGHT

For more information regarding these tables, please contact Pam Prince on (09) 360 5207.

| Period | Metallic Minerals | | Non-Metallic Minerals | | | Total minerals |
|------------------------|--------------------------|-------|-----------------------|----------|-------|----------------|
| | Base metals ¹ | Gold | Other | Diamonds | Other | |
| (\$ million) | | | | | | |
| Financial years | | | | | | |
| 1993-94 | 63.3 | 310.2 | 31.5 | 46.6 | 2.1 | 453.7 |
| 1994-95 | 58.8 | 379.4 | 17.9 | 35.2 | 5.6 | 495.5 |
| 1995-96 | 89.0 | 367.8 | 6.9 | 33.8 | 6.0 | 519.5 |
| Quarters | | | | | | |
| Mar 95 | 17.2 | 79.5 | 3.4 | 5.1 | 0.6 | 106.3 |
| June 95 | 14.1 | 108.2 | 4.0 | 5.8 | 0.6 | 135.3 |
| Sep 95 | 16.6 | 90.4 | 4.5 | 9.7 | 2.4 | 124.9 |
| Dec 95 | 17.5 | 100.0 | 4.8 | 7.4 | 1.1 | 128.9 |
| Mar 96 | 21.8 | 83.9 | n.a. | 4.9 | 2.1 | 117.8 |
| Jun 96 | 32.3 | 93.4 | n.a. | 11.7 | 1.6 | 147.0 |

¹ Includes copper, lead, zinc, silver, nickel and cobalt.

Reference: Actual and Expected Private Mineral Exploration Expenditure, Australia (8412.0)

6.6 MINERAL PRODUCTION

| Period | Iron ore | Bauxite | Gold | Ilmenite | Nickel | Diamonds |
|------------------------|-------------|-------------|---------|-------------|-------------|-------------|
| | '000 tonnes | '000 tonnes | kg | '000 tonnes | '000 tonnes | '000 carats |
| Financial years | | | | | | |
| 1993-94 | 119 690 | 27 087 | 193 599 | 1 612 | 62 | 39 909 |
| 1994-95 | 132 742 | 26 852 | 187 280 | 1 631 | 94 | 43 591 |
| 1995-96 | 143 392 | 28 250 | 205 830 | 1 871 | 105 | 42 517 |
| Quarters | | | | | | |
| Mar 95 | 32 265 | 6 657 | 45 396 | 388 | 25 | 10111r |
| Jun 95 | 34 738 | 6 729 | 47 000 | 433 | 27 | 9324r |
| Sep 95 | 36459r | 7 451 | 48 765 | 500 | 25 | 9105r |
| Dec 95 | 35213r | 7 028 | 48 675 | 477 | 24r | 12153r |
| Mar 96 | 35890r | 6 946 | 53 100 | 417r | 26 | 11473r |
| Jun 96 | 35 830 | 6 825 | 55 290 | 477 | 30 | 9 787 |

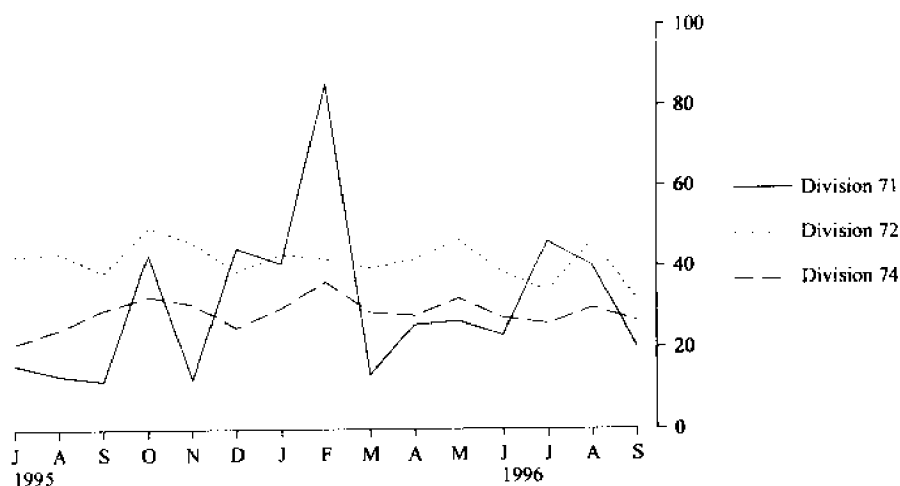
Source: Australian Bureau of Agricultural and Resource Economics

7.1 IMPORTS BY SELECTED DIVISION

| Period | 33 Petroleum, petroleum products, etc | 71 Power generating equipment and machinery | 72 Machinery specialised for particular industries | 74 General industrial machinery and equipment | 78 Road vehicles |
|------------------------|--|---|--|---|---------------------|
| | (\$ million) | | | | |
| Financial years | | | | | |
| 1993-94 | 678.4 | 189.7 | 432.2 | 254.0 | 690.0 |
| 1994-95 | 823.8 | 203.1 | 436.9 | 308.7 | 802.1 |
| 1995-96 | 768.9 | 356.1 | 510.3 | 345.7 | 794.5 |
| Months | | | | | |
| Jul 95 | 69.1 | 16.0 | 42.7 | 21.1 | 82.7 |
| Aug 95 | 76.0 | 13.3 | 43.5 | 24.7 | 69.8 |
| Sep 95 | 40.2 | 12.0 | 38.5 | 29.5 | 59.7 |
| Oct 95 | 63.1 | 43.1 | 49.7 | 32.8 | 78.9 |
| Nov 95 | 51.2 | 12.3 | 46.1 | 30.7 | 72.9 |
| Dec 95 | 72.0 | 44.5 | 38.7 | 25.0 | 60.4 |
| Jan 96 | 74.7 | 40.8 | 43.0 | 29.8 | 47.2 |
| Feb 96 | 72.8 | 85.5 | 41.8 | 36.4 | 53.8 |
| Mar 96 | 74.2 | 13.5 | 39.6 | 28.7 | 60.0 |
| Apr 96 | 56.4 | 25.6 | 41.9 | 27.8 | 62.5 |
| May 96 | 69.9 | 26.5 | 46.6 | 32.2 | 74.6 |
| Jun 96 | 47.6 | 23.0 | 38.5 | 27.2 | 72.1 |
| Jul 96 | 115.1 | 46.2 | 34.0 | 25.8 | 70.7 |
| Aug 96 | 92.7 | 40.2 | 46.3 | 29.8 | 74.3 |
| Sep 96 | 39.2 | 20.0 | 31.9 | 26.3 | 63.0 |

Reference: Fastracs Trade Statistics

IMPORTS BY SELECTED DIVISION



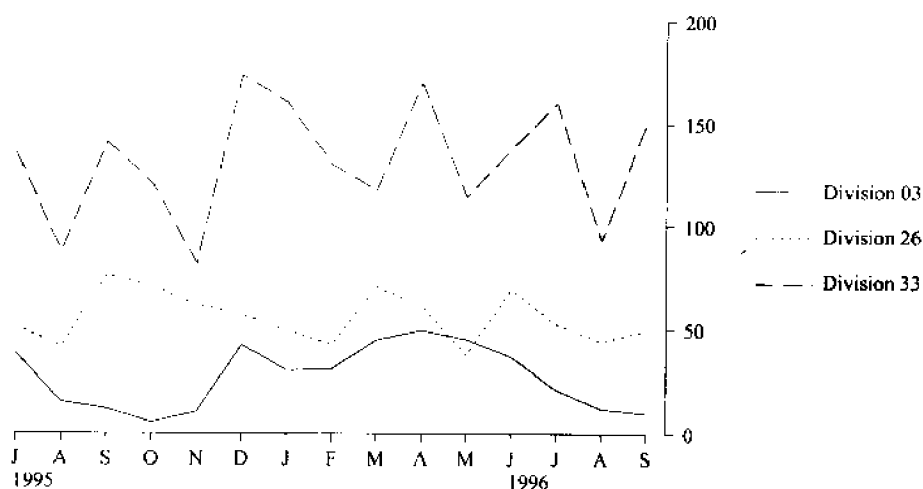
Source: Fastracs Trade Statistics

7.2 EXPORTS BY SELECTED DIVISIONS

| Period | 03 Fish, crustaceans, molluscs, etc | 04 Cereals and cereal preparations | 26 Textile fibres and waste (excluding yarn or fabric) | 28 Metalliferous ores and metal scrap | 33 Petroleum, petroleum products etc. |
|------------------------|--|---|---|--|--|
| (\$ million) | | | | | |
| Financial years | | | | | |
| 1993-94 | 413.3 | 1 150.1 | 656.1 | 2 999.4 | 882.9 |
| 1994-95 | 408.6 | 1 154.3 | 733.8 | 3 094.0 | 1 544.4 |
| 1995-96 | 364.2 | 1 874.9 | 692.6 | 3 221.8 | 1 586.0 |
| Months | | | | | |
| Jul 95 | 38.6 | 82.5 | 51.0 | 242.2 | 135.9 |
| Aug 95 | 15.3 | 89.5 | 41.9 | 320.9 | 87.9 |
| Sep 95 | 12.2 | 114.7 | 76.2 | 263.8 | 141.6 |
| Oct 95 | 5.6 | 123.5 | 70.7 | 271.0 | 121.3 |
| Nov 95 | 10.5 | 164.9 | 61.8 | 269.8 | 81.9 |
| Dec 95 | 42.7 | 209.6 | 57.2 | 274.3 | 174.0 |
| Jan 96 | 30.4 | 213.7 | 49.2 | 246.0 | 160.6 |
| Feb 96 | 31.1 | 197.6 | 42.8 | 233.6 | 130.3 |
| Mar 96 | 45.1 | 185.3 | 70.8 | 275.5 | 117.5 |
| Apr 96 | 49.6 | 177.7 | 61.5 | 251.6 | 170.0 |
| May 96 | 45.5 | 161.9 | 37.5 | 259.7 | 114.4 |
| Jun 96 | 37.2 | 153.5 | 69.6 | 314.8 | 138.2 |
| Jul 96 | 21.2 | 121.5 | 52.4 | 299.8 | 160.4 |
| Aug 96 | 12.0 | 104.4 | 44.2 | 295.8 | 92.9 |
| Sep 96 | 10.0 | 113.1 | 49.9 | 289.9 | 150.0 |

Reference: Fastraccs Trade Statistics

EXPORTS BY SELECTED DIVISIONS



Source: Fastraccs Trade Statistics

8.1 NEW MOTOR VEHICLE REGISTRATIONS¹

| Period | Western Australia | | | | Total | Perth Statistical Division |
|------------------------|-----------------------|---------------------------------|---------------------|---------------------------------|--------|----------------------------------|
| | Passenger vehicles | Light commercial vehicles | Trucks and buses | Motor cycles and scooters | | |
| Financial years | | | | | | |
| 1993-94 | 48 589 | 10 350 | 2 136 | 2 103 | 63 178 | 49 074 |
| 1994-95 | 51 947 | 10 782 | 2 170 | 2 344 | 67 243 | 52 168 |
| 1995-96 | 51 134 | 10 838 | 2 315 | 2 440 | 66 727 | 51 390 |
| Months | | | | | | |
| Aug 95 | 4 395 | 771 | 235 | 192 | 5 593 | 4 405 |
| Sep 95 | 4 021 | 738 | 209 | 187 | 5 155 | 4 119 |
| Oct 95 | 4 111 | 812 | 175 | 201 | 5 299 | 4 136 |
| Nov 95 | 4 595 | 945 | 247 | 365 | 6 148 | 4 887 |
| Dec 95 | 4 308 | 884 | 207 | 209 | 5 608 | 4 249 |
| Jan 96 | 3 178 | 692 | 140 | 174 | 4 184 | 3 041 |
| Feb 96 | 4 516 | 1 090 | 158 | 170 | 5 934 | 4 472 |
| Mar 96 | 4 718 | 995 | 174 | 201 | 6 088 | 4 624 |
| Apr 96 | 4 109 | 804 | 145 | 230 | 5 288 | 4 046 |
| May 96 | 4 889 | 1 139 | 204 | 198 | 6 430 | 5 114 |
| Jun 96 | 4 590 | 1 199 | 223 | 157 | 6 169 | 4 662 |
| Jul 96 | 4 580 | 895 | 201 | 174 | 5 850 | 4 590 |
| Aug 96 | 4 728 | 839 | 177 | 216 | 5 960 | 4 756 |
| Sep 96 | 4 392 | 748 | 177 | 183 | 5 500 | 4 442 |

¹ Excludes plant and equipment, caravans and trailers
Reference: Unpublished statistics

8.2 VEHICLE REGISTRATION STATISTICS¹

| Period | Passenger Vehicles | | Other Vehicles | | Total | |
|---------------|--------------------|-------------------|----------------|-------------------|----------|-------------------|
| | Original | Trend estimate | Original | Trend estimate | Original | Trend estimate |
| Months | | | | | | |
| Aug 95 | 4 395 | 4 213 | 1 006 | 1 090 | 5 401 | 5 303 |
| Sep 95 | 4 021 | 4 128 | 947 | 1 067 | 4 968 | 5 195 |
| Oct 95 | 4 111 | 4 068 | 987 | 1 055 | 5 098 | 5 123 |
| Nov 95 | 4 595 | 4 063 | 1 192 | 1 058 | 5 787 | 5 121 |
| Dec 95 | 4 308 | 4 120 | 1 091 | 1 071 | 5 399 | 5 191 |
| Jan 96 | 3 178 | 4 212 | 832 | 1 087 | 4 010 | 5 299 |
| Feb 96 | 4 516 | 4 338 | 1 248 | 1 101 | 5 764 | 5 439 |
| Mar 96 | 4 718 | 4 475 r | 1 169 | 1 116 r | 5 887 | 5 591 r |
| Apr 96 | 4 109 | 4 583 r | 1 179 | 1 129 r | 5 288 | 5 712 r |
| May 96 | 4 889 | 4 634 r | 1 343 | 1 138 r | 6 430 | 5 772 r |
| Jun 96 | 4 590 | 4 629 r | 1 422 | 1 144 r | 6 012 | 5 773 r |
| Jul 96 | 4 580 | 4 597 r | 1 096 | 1 144 r | 5 676 | 5 741 r |
| Aug 96 | 4 728 | 4 561 r | 1 016 | 1 138 r | 5 744 r | 5 699 r |
| Sep 96 | 4 392 | 4 543 | 925 | 1 139 | 5 317 | 5 682 |

¹ Other vehicles excludes motor cycles, plant and equipment, caravans and trailers.

Reference: Unpublished statistics

For more information regarding these tables, please contact Cheryl Smith on (09) 360 5242

9.1 PRIVATE NEW CAPITAL EXPENDITURE BY SELECTED INDUSTRY GROUPS (ORIGINAL SERIES)

| Period | Selected Industry | | | Total | Seasonally adjusted |
|------------------------|-------------------|--------------------|------------------------------|----------|---------------------|
| | Mining | Manu- facturing | Other selected industries | Original | |
| (\$ million) | | | | | |
| Financial Years | | | | | |
| 1994-95 | 4 046 | 595 | 2 216 | 6 857 | 6 819 |
| 1995-96 | 4 173 | 978 | 2 571 | 7 722 | 7 729 |
| Quarters | | | | | |
| Mar 95 | 1 007 | 133 | 452 | 1 592 | 1 770 |
| Jun 95 | 1 027 | 209 | 487 | 1 724 | 1 757 |
| Sep 95 | 1 041 | 205 | 577 | 1 823 | 1 877 |
| Dec 95 | 1 178 | 176 | 764 | 2 119 | 1 839 |
| Mar 96 | 894 | 209 | 552 | 1 655 | 1 848 |
| Jun 96 | 1 060 | 387 | 678 | 2 125 | 2 165 |

Reference: State Estimates of Private New Capital Expenditure (5646.0)

9.2 STATE FINAL DEMAND AND PRODUCTION ACCOUNT TREND DATA AT CURRENT PRICES

Analysis of Table 9.2

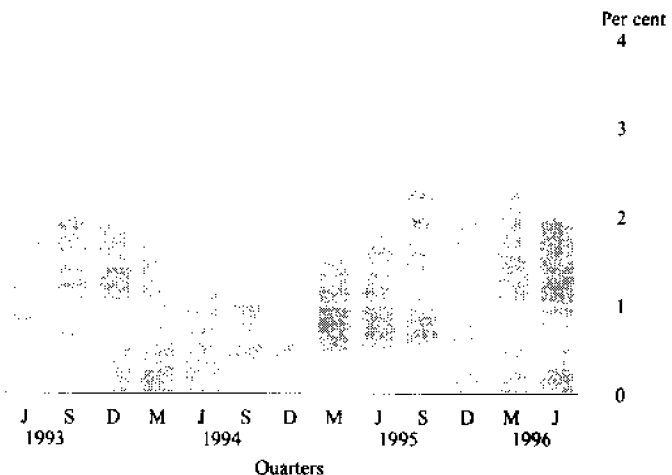
GSP grew by 2.0% in the June quarter. Growth through the year to June quarter 1996 was 10.2%. Growth in wages, salaries and supplements was slightly lower than in recent quarters, rising by 1.7% in the June quarter. Growth through the year to June quarter 1996 was 7.7%. Gross operating surplus grew by 2.7% in the June quarter, the highest growth rate this quarter for any state. Indirect taxes less subsidies grew by 0.3% in the June quarter, continuing a pattern of falling growth rates evident from December quarter 1995.

For more information about this table, please contact Paul Smith
(09) 360 5127

| Period | Wages salaries and supplements | Gross operating surplus | Indirect taxes less subsidies | GSP (income based) |
|-----------------|-----------------------------------|----------------------------|----------------------------------|-----------------------|
| | (\$ million) | | | |
| Quarters | | | | |
| Dec 93 | 4 990 | 4 959 | 1 185 | 11 134 |
| Mar 94 | 5 044 | 5 046 | 1 246 | 11 336 |
| Jun 94 | 5 073 | 5 144 | 1 298 | 11 515 |
| Sep 94 | 5 112 | 5 189 | 1 328 | 11 629 |
| Dec 94 | 5 182 | 5 188 | 1 327 | 11 697 |
| Mar 95 | 5 288 | 5 280 | 1 314 | 11 882 |
| Jun 95 | 5 369 | 5 407 | 1 329 | 12 105 |
| Sep 95 | 5 463 | 5 563 | 1 390 | 12 416 |
| Dec 95 | 5 580 | 5 740 | 1 449 | 12 769 |
| Mar 96 | 5 690 | 5 914 | 1 475 | 13 079 |
| Jun 96 | 5 785 | 6 076 | 1 479 | 13 340 |

Reference: State Accounts (5242.0)

PERCENTAGE CHANGE IN GSP(A) - TREND WESTERN AUSTRALIA



(A) Gross State Product at current prices
Source: State Accounts 5242.0

10.1 STATISTICAL SUMMARY

| Indicator | Period | Unit | Western Australia | | | | |
|--|--------------|-----------|---------------------------|----------------|----------------------------|---------------------|------------------------------|
| | | | Current Australian figure | Current figure | Change from last period(%) | Figure one year ago | Change from one year ago (%) |
| POPULATION | | | | | | | |
| Estimated resident population | Mar qtr 96 p | '000 | 18 238.6 | 1 755.5 | 0.5 | 1 723.4 | 1.9 |
| Natural increase | Mar qtr 96 p | No. | 34 715 | 3 651 | 3.7 | 4 093 | -10.8 |
| Net estimated migration gain | Mar qtr 96 p | No. | 35 322 | 5 487 | 63.2 | 4 915 | 11.6 |
| TOURISM | | | | | | | |
| <i>Hotels and motels, etc with facilities</i> | | | | | | | |
| Guest arrivals | Jun qtr 96 | '000 | 7 477 | 524 | -4.4 | 521.1 | 0.6 |
| Guest rooms available | Jun qtr 96 | No. | 172 372 | 15 085 | 1 | 14 754 | 2.2 |
| Room occupancy rates | Jun qtr 96 | % | 56 | 56.5 | -5 | 57.4 | -1.6 |
| <i>Overseas visitors</i> | | | | | | | |
| Long-term Arrivals | Aug 96 | No. | 5 220 | 500 | -73.7 | 450 | 11.1 |
| Short-term Arrivals | Aug 96 | No. | 329 240 | 28 950 | 0.6 | 24 840 | 16.6 |
| <i>Resident Departures</i> | | | | | | | |
| Long-term Departures | Aug 96 | No. | 6 420 | 660 | 3.1 | 650 | 1.5 |
| Short-term Departures | Aug 96 | No. | 222 440 | 27 420 | -15.1 | 23 320 | 17.6 |
| EMPLOYMENT | | | | | | | |
| Employed persons (Trend) | Oct 96 | '000 | 8 371.9 | 848.9 | 0.2 | 829.4 | 2.4 |
| <i>Unemployed persons</i> | | | | | | | |
| Looking for work (Original) | Oct 96 | '000 | 764.9 | 65.1 | -5.8 | 61.8 | 5.3 |
| Looking for work (Trend) | Oct 96 | '000 | 801.5 | 70.3 | 0.0 | 66.9 | 7.1 |
| <i>Participation rate</i> | | | | | | | |
| Original | Oct 96 | % | 63.5 | 65.7 | -1.5 | 65.9 | -0.3 |
| Trend | Oct 96 | % | 63.6 | 66.5 | 0.0 | 66.4 | 0.2 |
| <i>Unemployment rate</i> | | | | | | | |
| Original | Oct 96 | % | 8.4 | 7.2 | -4.0 | 6.9 | 4.3 |
| Trend | Oct 96 | % | 8.7 | 7.7 | 0.0 | 7.5 | 2.7 |
| <i>Full-time adult average weekly earnings</i> | | | | | | | |
| Males | Aug 96 | \$ | 774.40 | 804.80 | -0.1 | 776.20 | 3.7 |
| Females | Aug 96 | \$ | 614.20 | 559.00 | 1.1 | 568.70 | 4.6 |
| Persons | Aug 96 | \$ | 716.90 | 728.70 | 0.3 | 702.90 | 3.7 |
| All employees total earnings | Aug 96 | \$ | 566.60 | 549.90 | -0.5 | 544.40 | 1.0 |
| <i>Average weekly overtime hours</i> | | | | | | | |
| Per employee | Aug 96 | hours | 1 | 1.2 | 3.4 | 1.3 | -8.2 |
| Per employee working overtime | Aug 96 | hours | 6.8 | 8.4 | 6.6 | 8 | 5.8 |
| Employees working overtime | Aug 96 | % | 14.9 | 14 | -3 | 16.1 | -13.2 |
| <i>Industrial disputes in progress (working days lost)</i> | | | | | | | |
| Total | Aug 96 | '000 | 119.2 | 8.5 | 372.2 | 9.7 | -12.4 |
| Per '000 employees year ended | Aug 96 | days | 139.0 | 160.0 | -1.2 | 66.0 | 142.4 |
| RETAIL | | | | | | | |
| <i>Monthly Retail Turnover</i> | | | | | | | |
| Original | Sep 96 | \$m | 9 628 | 939.8 | -6.9 | 987.5 | -4.8 |
| Trend estimate | Sep 96 | \$m | 10 261.3 | 1 007.3 | -0.8 | 1 013.5 | -0.6 |
| Consumer Price Index | Jun qtr 96 | Index No. | 119.8 | 117.9 | 0.7 | 114.9 | 2.6 |

10.1 STATISTICAL SUMMARY continued

| Indicator | Period | Unit | Current Australian figure | Western Australia | | Change from one year ago (%) | |
|--|--------------|-----------|---------------------------|-------------------|-----------------------------|------------------------------|-------|
| | | | | Current figure | Change from last period (%) | | |
| CONSTRUCTION | | | | | | | |
| <i>Building Approvals</i> | | | | | | | |
| Dwelling Units | Sep 96 | No. | 10 016 | 1 210 | -2.3 | 1 410 | -18.2 |
| Value of all building | Sep 96 | \$m | 2 328.1 | 219.2 | -18.2 | 217.4 | 0.8 |
| <i>Building Commencements</i> | | | | | | | |
| Dwelling Units | Jun qtr 96 | No. | 30 996 | 3 778 | 10.2 | 4 623 | -18.3 |
| Value of all building | Jun qtr 96 | \$m | 6 413.7 | 626.3 | 6.8 | 658.5 | -4.9 |
| <i>Total Building</i> | | | | | | | |
| Value of work done during | Jun qtr 96 | \$m | 6 256.5 | 619.3 | 5.8 | 671.9 | -7.8 |
| Value of work yet to be done | Jun qtr 96 | \$m | 9 177.1 | 605.5 | 12 | 642.4 | -5.7 |
| <i>Engineering Construction</i> | | | | | | | |
| Value of work commenced | Jun qtr 96 | \$m | 3 072.4 | 794.7 | 20.9 | 489.7 | 62.6 |
| Value of work done during | Jun qtr 96 | \$m | 4 114.7 | 856.2 | 46.5 | 477.8 | 79.1 |
| Value of work yet to be done | Jun qtr 96 | \$m | 5 704.3 | 1 353.4 | 1.3 | 1 052.6 | 28.6 |
| <i>Housing Price Indexes</i> | | | | | | | |
| Materials used in house building | Jun qtr 96 | Index No. | 115.5 | 114.6 | 0 | 114.2 | 0.4 |
| Established houses | Jun qtr 96 | Index No. | 113.6 | 108.2 | 0.7 | 109.7 | -1.4 |
| Project Homes | Jun qtr 96 | Index No | 109.6 | 101.4 | 0.1 | 100.8 | 0.6 |
| MINERAL EXPLORATION | | | | | | | |
| Gold | Jun qtr 96 | \$m | 147.4 | 93.4 | 11.3 | 108.2 | -11.4 |
| Other minerals | Jun qtr 96 - | \$m | 137.5 | 53.6 | 58.1 | 27.1 | 97.8 |
| OVERSEAS TRADE | | | | | | | |
| Imports | Sep 96 | \$m | 6 256.0 | 406.7 | -27.7 | 496.0 | -18.0 |
| Exports | Sep 96 | \$m | 5 819.4 | 1 426.5 | -3.6 | 1 633.9 | -12.7 |
| TRANSPORT | | | | | | | |
| <i>Passenger vehicle registrations</i> | | | | | | | |
| Original | Sep 96 | No. | 42 946 | 4 392 | -7.1 | 4 021 | 9.2 |
| Trend | Sep 96 | No. | 45 265 | 4 543 | -0.4 | 4 128 | 10 |
| <i>Total registrations</i> | | | | | | | |
| Original | Sep 96 | No. | 51 089 | 5 317 | -7.4 | 4 968 | 7 |
| Trend | Sep 96 | No. | 54 229 | 5 682 | -0.3 | 5 195 | 9.4 |
| FINANCE | | | | | | | |
| <i>Private New Capital Expenditure</i> | | | | | | | |
| Original | Jun qtr 96 | \$m | 11 129 | 2 125 | 28.4 | 1 724 | 23.3 |
| Seasonally adjusted | Jun qtr 96 | \$m | 10 682 | 2 165 | 17.2 | 1 757 | 23.2 |
| <i>Gross State Product (Income based)</i> | | | | | | | |
| Current prices | Jun qtr 96 | \$m | 122 332 | 12 573 | 0.3 | 11 603 | 8.4 |
| State Final Demand at average 1989-90 prices | Jun qtr 96 | \$m | 109 714 | 11 419 | 6.0 | 10 642 | 7.3 |

For more information...

The ABS publishes a wide range of information on Australia's economic and social conditions. Details of what is available in various publications and other products can be found in the *ABS Catalogue of Publications and Products* which is available from any of our Offices (see below for contact details).

ABS Products and Services

Many standard products are available from ABS Bookshops located in each State and Territory. In addition to these products, information tailored to special needs of clients or in-depth data investigations can be obtained on a wide range of media by contacting the ABS Information Consultancy Services in your nearest ABS office.

National Dial-a-Statistic Line

0055 86 400

(Steadycorn P/L premium rate 25c/21.4 secs.)

This number gives 24 hours access, 365 days a year for a range of important economic statistics, including the CPI.

Internet

<http://www.abs.gov.au>

A wide range of ABS information is available via the Internet, with basic statistics available for each State, Territory and Australia. We also have Key National Indicators, ABS product release details and other information of general interest.

Bookshops and Subscriptions

There are now over 500 titles available from the ABS Bookshops in each of our Offices. The ABS also provides a subscription mailing service through which nominated publications are provided by mail at no additional cost. (Telephone Publications Subscription Service toll free on 008 02 0608 Australia wide).

Sales and Inquiries

| Regional Offices | Information Enquiries | Bookshop Sales |
|--------------------------|------------------------------|-----------------------|
| SYDNEY | (02) 9268 4611 | 9268 4620 |
| MELBOURNE | (03) 9615 7000 | 9615 7829 |
| BRISBANE | (07) 3222 6531 | 3222 6350 |
| PERTH | (09) 360 5140 | 360 5307 |
| ADELAIDE | (08) 237 7100 | 237 7582 |
| HOBART | (002) 20 5800 | 20 5800 |
| CANBERRA | (06) 207 0326 | 207 0326 |
| DARWIN | (08) 8943 2111 | 8943 2111 |
| ■ National Office | | |
| ACT | (06)252 6007 | 008 020 608 |



**Information Services,
Exchange Plaza,
Sherwood Court,
Perth WA 6000.
or any ABS Office**



© Commonwealth of Australia 1996

Recommended retail price: \$15.00



2130550011961
ISSN 0727-2367